

For Research Use Only

# JAM3 Recombinant Matched Antibody Pair, PBS Only



Catalog Number:MP02796-2

## Capture Antibody Information

Catalog Number:

86960-2-PBS

Host:

Rabbit

Isotype:

IgG

Purification Method:

Protein A purification

Clone ID:

251954A10

Reactivity:

human

Immunogen Catalog Number:

Eg6611

Conjugate:

Unconjugated

Full name:

junctional adhesion molecule 3

Gene ID:

83700

## Detection Antibody Information

Catalog Number:

86960-3-PBS

Host:

Rabbit

Isotype:

IgG

Purification Method:

Protein A purification

Clone ID:

251954E9

Reactivity:

human

GenBank:

NM\_032801.5

Immunogen Catalog Number:

Eg6611

Conjugate:

Unconjugated

Full name:

junctional adhesion molecule 3

Gene ID:

83700

## Applications

Tested Applications:

Sandwich ELISA

Range:

125-4000 pg/mL (Sandwich ELISA)

Recommended Dilutions:

It is recommended that this reagent should be titrated in each testing system to obtain optimal results.

## Product Information

MP02796-2 targets JAM3 in immunoassays as a matched antibody pair. Validated in Sandwich ELISA.

Capture antibody: JAM3 Recombinant monoclonal antibody, PBS Only (Capture) 86960-2-PBS (251954A10). 100 µg. Concentration 1 mg/mL.

Detection antibody: JAM3 Recombinant monoclonal antibody, PBS Only (Detector) 86960-3-PBS (251954E9). 100 µg. Concentration 1 mg/mL.

Unconjugated rabbit recombinant monoclonal antibody pair in PBS only storage buffer at a concentration of 1 mg/mL, ready for conjugation. Created using Proteintech's proprietary in-house recombinant technology. Recombinant production enables unrivalled batch-to-batch consistency, easy scale-up, and future security of supply.

Matched antibody pairs are designed for use in a variety of assays and platforms that require matched antibody pairs.

Antibody use should be optimized for each application and assay.

## Storage

Storage:

Store at -80°C.

Storage buffer:

PBS only

For technical support and original validation data for this product please contact:

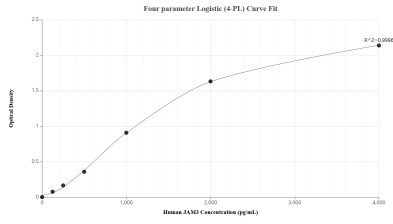
T: 1 (888) 4PTGLAB (1-888-478-4522) (toll free in USA), or 1(312) 455-8498 (outside USA)

E: [proteintech@ptglab.com](mailto:proteintech@ptglab.com)

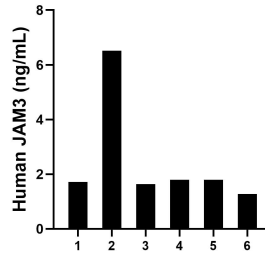
W: [ptglab.com](http://ptglab.com)

This product is exclusively available under Proteintech Group brand and is not available to purchase from any other manufacturer.

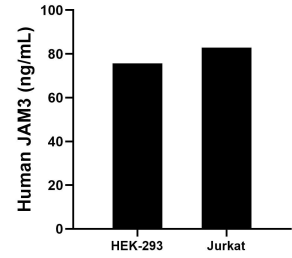
## Selected Validation Data



Sandwich ELISA standard curve of MP02796-2, Human JAM3 Recombinant Matched Antibody Pair - PBS only. 86960-2-PBS was coated to a plate as the capture antibody and incubated with serial dilutions of standard Eg6611. 86960-3-PBS was HRP conjugated as the detection antibody. Range: 125--4000 pg/mL



Serum of eight individual healthy human donors was measured. The JAM3 concentration of detected samples was determined to be 2.5 ng/mL with a range of 1.3-6.5 ng/mL



The mean JAM3 concentration was determined to be 75.6 ng/mL in HEK-293 cell extract based on a 1.2 mg/mL extract load and 82.8 ng/mL in Jurkat cell extract based on a 1.2 mg/mL extract load.