

For Research Use Only

# Mouse CCL17/TARC Recombinant Matched Antibody Pair, PBS Only



Catalog Number:MP02817-1

## Capture Antibody Information

Catalog Number:

86482-3-PBS

Host:

Rabbit

Isotype:

IgG

Purification Method:

Protein A purification

Clone ID:

250385F4

Reactivity:

mouse

Immunogen Catalog Number:

Eg3319

Conjugate:

Unconjugated

Full name:

chemokine (C-C motif) ligand 17

Gene ID:

20295

## Detection Antibody Information

Catalog Number:

86482-2-PBS

Host:

Rabbit

Isotype:

IgG

Purification Method:

Protein A purification

Clone ID:

250385B8

Reactivity:

mouse

GenBank:

NM\_011332.3

Immunogen Catalog Number:

Eg3319

Conjugate:

Unconjugated

Full name:

chemokine (C-C motif) ligand 17

Gene ID:

20295

## Applications

Tested Applications:

Sandwich ELISA

Range:

23.4-1500 pg/mL (Sandwich ELISA)

Recommended Dilutions:

It is recommended that this reagent should be titrated in each testing system to obtain optimal results.

## Product Information

MP02817-1 targets CCL17/TARC in immunoassays as a matched antibody pair. Validated in Sandwich ELISA.

Capture antibody: Mouse Ccl17 Recombinant monoclonal antibody, PBS Only (Capture) 86482-3-PBS (250385F4). 100 µg. Concentration 1 mg/mL.

Detection antibody: Mouse Ccl17 Recombinant monoclonal antibody, PBS Only (Detector) 86482-2-PBS (250385B8). 100 µg. Concentration 1 mg/mL.

Unconjugated rabbit recombinant monoclonal antibody pair in PBS only storage buffer at a concentration of 1 mg/mL, ready for conjugation. Created using Proteintech's proprietary in-house recombinant technology. Recombinant production enables unrivalled batch-to-batch consistency, easy scale-up, and future security of supply.

Matched antibody pairs are designed for use in a variety of assays and platforms that require matched antibody pairs.

Antibody use should be optimized for each application and assay.

## Storage

Storage:

Store at -80°C.

Storage buffer:

PBS only

For technical support and original validation data for this product please contact:

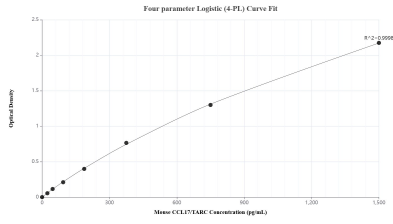
T: 1 (888) 4PTGLAB (1-888-478-4522) (toll free in USA), or 1(312) 455-8498 (outside USA)

E: [proteintech@ptglab.com](mailto:proteintech@ptglab.com)

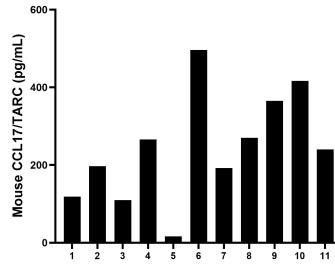
W: [ptglab.com](http://ptglab.com)

This product is exclusively available under Proteintech Group brand and is not available to purchase from any other manufacturer.

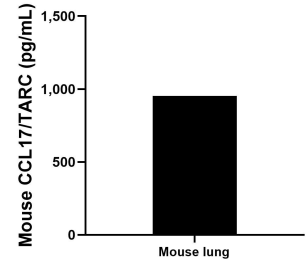
## Selected Validation Data



Sandwich ELISA standard curve of MP02817-1, Mouse CCL17/TARC Recombinant Matched Antibody Pair - PBS only. 86482-3-PBS was coated to a plate as the capture antibody and incubated with serial dilutions of standard Eg3319. 86482-2-PBS was HRP conjugated as the detection antibody. Range: 23.4-1500 pg/mL



Serum of eleven mice was measured. The CCL17/TARC concentration of detected samples was determined to be 244.4 pg/mL with a range of 16.2-496.4 pg/mL.



Mouse lung, cut into 1-2 mm pieces, was cultured in RPMI 1640 supplemented with 10% fetal bovine serum, 2 mM L-glutamine, 100 U/mL penicillin, and 100 µg/mL streptomycin sulfate. An aliquot of the cell culture supernatant was removed, assayed for CCL17/TARC, and measured 952.8 pg/mL