

For Research Use Only



# KRR1 Recombinant Matched Antibody Pair, PBS Only

Catalog Number:MP02819-2

## Capture Antibody Information

Catalog Number:  
86993-2-PBS

Host:  
Rabbit

Isotype:  
IgG

Purification Method:  
Protein A purification

Clone ID:  
252034H4

Reactivity:  
human

Immunogen Catalog Number:  
Ag3464

Conjugate:  
Unconjugated

Full name:  
KRR1, small subunit (SSU) processome component, homolog (yeast)

Gene ID:  
11103

## Detection Antibody Information

Catalog Number:  
86993-4-PBS

Host:  
Rabbit

Isotype:  
IgG

Purification Method:  
Protein A purification

Clone ID:  
252034G4

Reactivity:  
human

GenBank:  
BC026107

Immunogen Catalog Number:  
Ag3464

Conjugate:  
Unconjugated

Full name:  
KRR1, small subunit (SSU) processome component, homolog (yeast)

Gene ID:  
11103

## Applications

Tested Applications:  
Sandwich ELISA

Range:  
0.313-20 ng/mL (Sandwich ELISA)

Recommended Dilutions:  
It is recommended that this reagent should be titrated in each testing system to obtain optimal results.

## Product Information

MP02819-2 targets KRR1 in immunoassays as a matched antibody pair. Validated in Sandwich ELISA.

Capture antibody: KRR1 Recombinant monoclonal antibody, PBS Only (Capture) 86993-2-PBS (252034H4). 100 µg. Concentration 1 mg/mL.

Detection antibody: KRR1 Recombinant monoclonal antibody, PBS Only (Detector) 86993-4-PBS (252034G4). 100 µg. Concentration 1 mg/mL.

Unconjugated rabbit recombinant monoclonal antibody pair in PBS only storage buffer at a concentration of 1 mg/mL, ready for conjugation. Created using Proteintech's proprietary in-house recombinant technology. Recombinant production enables unrivalled batch-to-batch consistency, easy scale-up, and future security of supply.

Matched antibody pairs are designed for use in a variety of assays and platforms that require matched antibody pairs.

Antibody use should be optimized for each application and assay.

## Storage

Storage:  
Store at -80°C.  
Storage buffer:  
PBS only

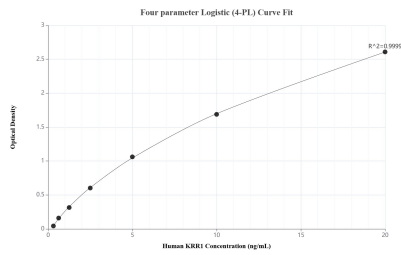
For technical support and original validation data for this product please contact:

T: 1 (888) 4PTGLAB (1-888-478-4522) (toll free in USA), or 1(312) 455-8498 (outside USA)

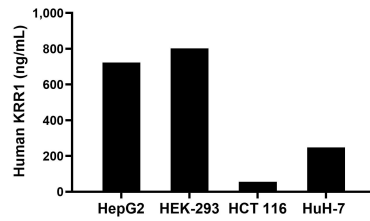
E: [proteintech@ptglab.com](mailto:proteintech@ptglab.com)  
W: [ptglab.com](http://ptglab.com)

This product is exclusively available under Proteintech Group brand and is not available to purchase from any other manufacturer.

## Selected Validation Data



Sandwich ELISA standard curve of MP02819-2, Human KRR1 Recombinant Matched Antibody Pair - PBS only. 86993-2-PBS was coated to a plate as the capture antibody and incubated with serial dilutions of standard Ag3464. 86993-4-PBS was HRP conjugated as the detection antibody. Range: 0.313-20 ng/mL



The mean KRR1 concentration was determined to be 722.68 ng/mL in HepG2 cell extract based on a 1.20 mg/mL extract load, 802.60 ng/mL in HEK-293 cell extract based on a 1.20 mg/mL extract load, 56.10 ng/mL in HCT 116 cell extract based on a 1.20 mg/mL extract load and 247.22 ng/mL in HuH-7 cell extract based on a 1.20 mg/mL extract load.