

For Research Use Only

# PRKCSH Recombinant Matched Antibody Pair, PBS Only



Catalog Number:MP02821-1

## Capture Antibody Information

Catalog Number:  
87004-2-PBS

Host:  
Rabbit

Isotype:  
IgG

Purification Method:  
Protein A purification

Clone ID:  
252090A9

Reactivity:  
human

Immunogen Catalog Number:  
Ag2796

Conjugate:  
Unconjugated

Full name:  
protein kinase C substrate 80K-H

Gene ID:  
5589

## Detection Antibody Information

Catalog Number:  
87004-1-PBS

Host:  
Rabbit

Isotype:  
IgG

Purification Method:  
Protein A purification

Clone ID:  
252090G4

Reactivity:  
human

GenBank:  
BC013586

Immunogen Catalog Number:  
Ag2796

Conjugate:  
Unconjugated

Full name:  
protein kinase C substrate 80K-H

Gene ID:  
5589

## Applications

Tested Applications:  
Cytometric bead array

Range:  
0.469-60 ng/mL (Cytometric Bead Array)

Recommended Dilutions:  
It is recommended that this reagent should be titrated in each testing system to obtain optimal results.

## Product Information

MP02821-1 targets PRKCSH in immunoassays as a matched antibody pair. Validated in Cytometric bead array.

Capture antibody: PRKCSH Recombinant monoclonal antibody, PBS Only (Capture) 87004-2-PBS (252090A9). 100 µg. Concentration 1 mg/mL.

Detection antibody: PRKCSH Recombinant monoclonal antibody, PBS Only (Detector) 87004-1-PBS (252090G4). 100 µg. Concentration 1 mg/mL.

Unconjugated rabbit recombinant monoclonal antibody pair in PBS only storage buffer at a concentration of 1 mg/mL, ready for conjugation. Created using Proteintech's proprietary in-house recombinant technology. Recombinant production enables unrivalled batch-to-batch consistency, easy scale-up, and future security of supply.

Matched antibody pairs are designed for use in a variety of assays and platforms that require matched antibody pairs.

Antibody use should be optimized for each application and assay.

## Storage

Storage:  
Store at -80°C.  
Storage buffer:  
PBS only

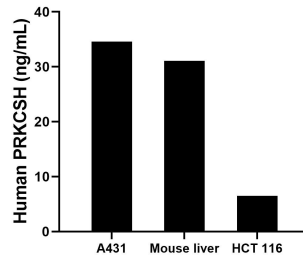
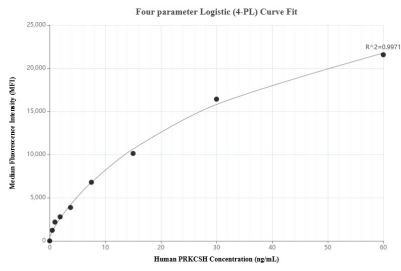
For technical support and original validation data for this product please contact:

T: 1 (888) 4PTGLAB (1-888-478-4522) (toll free in USA), or 1(312) 455-8498 (outside USA)

E: [proteintech@ptglab.com](mailto:proteintech@ptglab.com)  
W: [ptglab.com](http://ptglab.com)

This product is exclusively available under Proteintech Group brand and is not available to purchase from any other manufacturer.

## Selected Validation Data



Cytometric bead array standard curve of MPO2821-1, PRKCSH Recombinant Matched Antibody Pair, PBS Only. Capture antibody: 87004-2-PBS. Detection antibody: 87004-1-PBS. Standard: Ag2796. Range: 0.469-60 ng/mL.

The mean PRKCSH concentration was determined to be 34.6 ng/mL in A431 cell extract based on a 1.2 mg/mL extract load, 31.1 ng/mL in mouse liver tissue extract based on a 8.4 mg/mL extract load, 6.5 ng/mL in HCT 116 cell extract based on a 1.2 mg/mL extract load.