

For Research Use Only

# JAB1 Recombinant Matched Antibody Pair, PBS Only



Catalog Number:MP02823-2

## Capture Antibody Information

Catalog Number:  
87012-1-PBS

Host:  
Rabbit

Isotype:  
IgG

Purification Method:  
Protein A purification

Clone ID:  
252139B3

Reactivity:  
human, mouse

Immunogen Catalog Number:  
Ag25950

Conjugate:  
Unconjugated

Full name:  
COP9 constitutive photomorphogenic homolog subunit 5 (Arabidopsis)

Gene ID:  
10987

## Detection Antibody Information

Catalog Number:  
87012-3-PBS

Host:  
Rabbit

Isotype:  
IgG

Purification Method:  
Protein A purification

Clone ID:  
252139A5

Reactivity:  
human

GenBank:  
BC001187

Immunogen Catalog Number:  
Ag25950

Conjugate:  
Unconjugated

Full name:  
COP9 constitutive photomorphogenic homolog subunit 5 (Arabidopsis)

Gene ID:  
10987

## Applications

Tested Applications:  
Sandwich ELISA

Range:  
0.156-10 ng/mL (Sandwich ELISA)

Recommended Dilutions:  
It is recommended that this reagent should be titrated in each testing system to obtain optimal results.

## Product Information

MP02823-2 targets JAB1 in immunoassays as a matched antibody pair. Validated in Sandwich ELISA.

Capture antibody: JAB1 Recombinant monoclonal antibody, PBS Only (Capture) 87012-1-PBS (252139B3). 100 µg. Concentration 1 mg/mL.

Detection antibody: JAB1 Recombinant monoclonal antibody, PBS Only (Detector) 87012-3-PBS (252139A5). 100 µg. Concentration 1 mg/mL.

Unconjugated rabbit recombinant monoclonal antibody pair in PBS only storage buffer at a concentration of 1 mg/mL, ready for conjugation. Created using Proteintech's proprietary in-house recombinant technology. Recombinant production enables unrivalled batch-to-batch consistency, easy scale-up, and future security of supply.

Matched antibody pairs are designed for use in a variety of assays and platforms that require matched antibody pairs.

Antibody use should be optimized for each application and assay.

## Storage

Storage:  
Store at -80°C.  
Storage buffer:  
PBS only

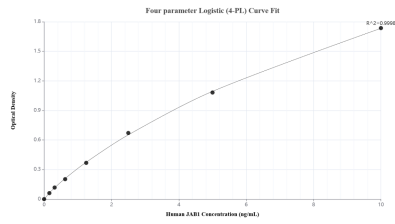
For technical support and original validation data for this product please contact:

T: 1 (888) 4PTGLAB (1-888-478-4522) (toll free in USA), or 1(312) 455-8498 (outside USA)

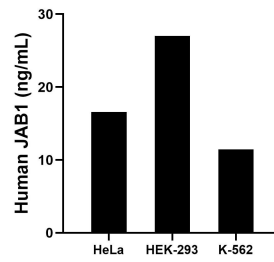
E: [proteintech@ptglab.com](mailto:proteintech@ptglab.com)  
W: [ptglab.com](http://ptglab.com)

This product is exclusively available under Proteintech Group brand and is not available to purchase from any other manufacturer.

## Selected Validation Data



Sandwich ELISA standard curve of MP02823-2, Human JAB1 Recombinant Matched Antibody Pair - PBS only. 87012-1-PBS was coated to a plate as the capture antibody and incubated with serial dilutions of standard Ag25950. 87012-3-PBS was HRP conjugated as the detection antibody. Range: 0.156-10 ng/mL



The mean JAB1 concentration was determined to be 16.58 ng/mL in HeLa cell extract based on a 1.20 mg/mL extract load, 27.02 ng/mL in HEK-293 cell extract based on a 1.20 mg/mL extract load and 11.45 ng/mL in K-562 cell extract based on a 1.20 mg/mL extract load.