

For Research Use Only

Rat Serpin A12/Vaspin Recombinant Matched Antibody Pair, PBS Only



Catalog Number:MP02832-1

Capture Antibody Information

Catalog Number:

86801-2-PBS

Host:

Rabbit

Isotype:

IgG

Purification Method:

Protein A purification

Clone ID:

251279E11

Reactivity:

rat

Immunogen Catalog Number:

Eg3407

Conjugate:

Unconjugated

Full name:

serine (or cysteine) peptidase inhibitor, clade A (alpha-1 antiproteinase, antitrypsin), member 12

Gene ID:

191570

Detection Antibody Information

Catalog Number:

86801-1-PBS

Host:

Rabbit

Isotype:

IgG

Purification Method:

Protein A purification

Clone ID:

251279E6

Reactivity:

rat

GenBank:

Eg3407

Immunogen Catalog Number:

Eg3407

Conjugate:

Unconjugated

Full name:

serine (or cysteine) peptidase inhibitor, clade A (alpha-1 antiproteinase, antitrypsin), member 12

Gene ID:

191570

Applications

Tested Applications:

Sandwich ELISA

Range:

1.25-20 ng/mL (Sandwich ELISA)

Recommended Dilutions:

It is recommended that this reagent should be titrated in each testing system to obtain optimal results.

Product Information

MP02832-1 targets Serpin A12/Vaspin in immunoassays as a matched antibody pair. Validated in Sandwich ELISA.

Capture antibody: Rat Serpin A12 Recombinant monoclonal antibody, PBS Only (Capture) 86801-2-PBS (251279E11). 100 µg. Concentration 1 mg/mL.

Detection antibody: Rat Serpin A12 Recombinant monoclonal antibody, PBS Only (Detector) 86801-1-PBS (251279E6). 100 µg. Concentration 1 mg/mL.

Unconjugated rabbit recombinant monoclonal antibody pair in PBS only storage buffer at a concentration of 1 mg/mL, ready for conjugation. Created using Proteintech's proprietary in-house recombinant technology. Recombinant production enables unrivalled batch-to-batch consistency, easy scale-up, and future security of supply.

Matched antibody pairs are designed for use in a variety of assays and platforms that require matched antibody pairs.

Antibody use should be optimized for each application and assay.

Storage

Storage:

Store at -80°C.

Storage buffer:

PBS only

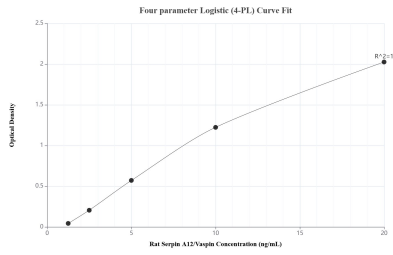
For technical support and original validation data for this product please contact:

T: 1 (888) 4PTGLAB (1-888-478-4522) (toll free in USA), or 1(312) 455-8498 (outside USA)

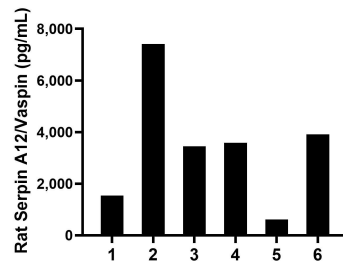
E: proteintech@ptglab.com
W: ptglab.com

This product is exclusively available under Proteintech Group brand and is not available to purchase from any other manufacturer.

Selected Validation Data



Sandwich ELISA standard curve of MP02832-1, Rat Serpin A12/Vaspin Recombinant Matched Antibody Pair - PBS only. 86801-2-PBS was coated to a plate as the capture antibody and incubated with serial dilutions of standard Eg3407. 86801-1-PBS was HRP conjugated as the detection antibody. Range: 1.25-20 ng/mL.



Serum of eight rats was measured. The Serpin A12/Vaspin concentration of detected samples was determined to be 3,420.9 pg/mL with a range of 618.2-7,418.0 pg/mL.