

ADAM8 Recombinant Matched Antibody Pair, PBS Only

Catalog Number: **MP02833-1**

Capture Antibody Information

Catalog Number:

87008-3-PBS

Host:

Rabbit

Isotype:

IgG

Purification Method:

Protein A purification

Clone ID:

251352H6

Reactivity:

human

Immunogen Catalog Number:

Eg2912

Conjugate:

Unconjugated

Full name:

ADAM metalloproteinase domain 8

Gene ID:

101

Detection Antibody Information

Catalog Number:

87008-2-PBS

Host:

Rabbit

Isotype:

IgG

Purification Method:

Protein A purification

Clone ID:

251352A5

Reactivity:

human

GenBank:

NM_001109.4

Immunogen Catalog Number:

Eg2912

Conjugate:

Unconjugated

Full name:

ADAM metalloproteinase domain 8

Gene ID:

101

Applications

Tested Applications:

Sandwich ELISA

Range:

0.625-40 ng/mL (Sandwich ELISA)

Recommended Dilutions:

It is recommended that this reagent should be titrated in each testing system to obtain optimal results.

Product Information

MP02833-1 targets ADAM8 in immunoassays as a matched antibody pair. Validated in Sandwich ELISA.

Capture antibody: ADAM8 Recombinant monoclonal antibody, PBS Only (Capture) 87008-3-PBS (251352H6). 100 µg. Concentration 1 mg/mL.

Detection antibody: ADAM8 Recombinant monoclonal antibody, PBS Only (Detector) 87008-2-PBS (251352A5). 100 µg. Concentration 1 mg/mL.

Unconjugated rabbit recombinant monoclonal antibody pair in PBS only storage buffer at a concentration of 1 mg/mL, ready for conjugation. Created using Proteintech's proprietary in-house recombinant technology. Recombinant production enables unrivalled batch-to-batch consistency, easy scale-up, and future security of supply.

Matched antibody pairs are designed for use in a variety of assays and platforms that require matched antibody pairs.

Antibody use should be optimized for each application and assay.

Storage

Storage:

Store at -80°C.

Storage buffer:

PBS only

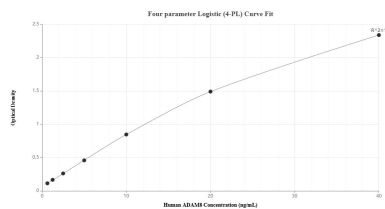
For technical support and original validation data for this product please contact:

T: 1 (888) 4PTGLAB (1-888-478-4522) (toll free in USA), or 1(312) 455-8498 (outside USA)

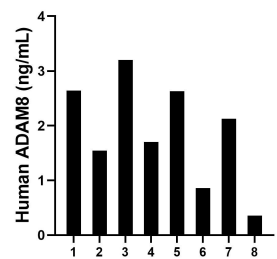
E: proteintech@ptglab.com
W: ptglab.com

This product is exclusively available under Proteintech Group brand and is not available to purchase from any other manufacturer.

Selected Validation Data



Sandwich ELISA standard curve of MP02833-1, Human ADAM8 Recombinant Matched Antibody Pair - PBS only. 87008-3-PBS was coated to a plate as the capture antibody and incubated with serial dilutions of standard Eg2912. 87008-2-PBS was HRP conjugated as the detection antibody. Range: 0.625-40 ng/mL



Serum of eight individual healthy human donors was measured. The human ADAM8 concentration of detected samples was determined to be 1.88 ng/mL with a range of 0.36 - 3.20 ng/mL.