

For Research Use Only

# BSN/Bassoon Recombinant Matched Antibody Pair, PBS Only



Catalog Number:MP02837-2

## Capture Antibody Information

**Catalog Number:**  
87031-1-PBS  
**Host:**  
Rabbit  
**Isotype:**  
IgG  
**Purification Method:**  
Protein A purification

**Clone ID:**  
252130E12  
**Reactivity:**  
human  
**Immunogen Catalog Number:**  
Ag33105

**Conjugate:**  
Unconjugated  
**Full name:**  
bassoon (presynaptic cytomatrix protein)  
**Gene ID:**  
8927

## Detection Antibody Information

**Catalog Number:**  
87031-3-PBS  
**Host:**  
Rabbit  
**Isotype:**  
IgG  
**Purification Method:**  
Protein A purification

**Clone ID:**  
252130H4  
**Reactivity:**  
human  
**GenBank:**  
NM\_003458  
**Immunogen Catalog Number:**  
Ag33105

**Conjugate:**  
Unconjugated  
**Full name:**  
bassoon (presynaptic cytomatrix protein)  
**Gene ID:**  
8927

## Applications

**Tested Applications:**  
Sandwich ELISA

**Range:**  
78.1-5000 pg/mL (Sandwich ELISA)

**Recommended Dilutions:**  
It is recommended that this reagent should be titrated in each testing system to obtain optimal results.

## Product Information

MP02837-2 targets BSN/Bassoon in immunoassays as a matched antibody pair. Validated in Sandwich ELISA.

Capture antibody: BSN Recombinant monoclonal antibody, PBS Only (Capture/Detector) 87031-1-PBS (252130E12). 100 µg. Concentration 1 mg/mL.

Detection antibody: BSN Recombinant monoclonal antibody, PBS Only (Detector) 87031-3-PBS (252130H4). 100 µg. Concentration 1 mg/mL.

Unconjugated rabbit recombinant monoclonal antibody pair in PBS only storage buffer at a concentration of 1 mg/mL, ready for conjugation. Created using Proteintech's proprietary in-house recombinant technology. Recombinant production enables unrivalled batch-to-batch consistency, easy scale-up, and future security of supply.

Matched antibody pairs are designed for use in a variety of assays and platforms that require matched antibody pairs.

Antibody use should be optimized for each application and assay.

## Storage

**Storage:**  
Store at -80°C.  
**Storage buffer:**  
PBS only

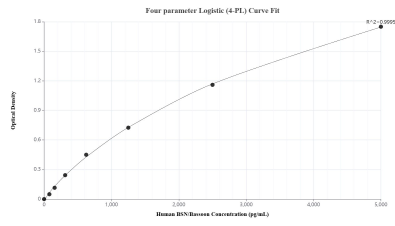
For technical support and original validation data for this product please contact:

T: 1 (888) 4PTGLAB (1-888-478-4522) (toll free in USA), or 1(312) 455-8498 (outside USA)

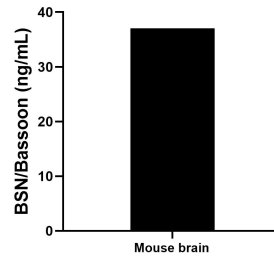
E: [proteintech@ptglab.com](mailto:proteintech@ptglab.com)  
W: [ptglab.com](http://ptglab.com)

**This product is exclusively available under Proteintech Group brand and is not available to purchase from any other manufacturer.**

## Selected Validation Data



Sandwich ELISA standard curve of MP02837-2, Human BSN/Bassoon Recombinant Matched Antibody Pair - PBS only. 87031-1-PBS was coated to a plate as the capture antibody and incubated with serial dilutions of standard Ag33105. 87031-3-PBS was HRP conjugated as the detection antibody. Range: 78.1-5000 pg/mL



The mean BSN/Bassoon concentration was determined to be 37.0 ng/mL in mouse brain tissue extract based on a 6.2 mg/mL extract load.