

For Research Use Only

# Elastin Recombinant Matched Antibody Pair, PBS Only



Catalog Number:MP02840-1

## Capture Antibody Information

Catalog Number:  
86483-3-PBS

Host:  
Rabbit

Isotype:  
IgG

Purification Method:  
Protein A purification

Clone ID:  
251241G9

Reactivity:  
human

Immunogen Catalog Number:  
Eg2766

Conjugate:  
Unconjugated

Full name:  
elastin

Gene ID:  
2006

## Detection Antibody Information

Catalog Number:  
86483-2-PBS

Host:  
Rabbit

Isotype:  
IgG

Purification Method:  
Protein A purification

Clone ID:  
251241E6

Reactivity:  
human

GenBank:  
N/A, 100%

Immunogen Catalog Number:  
Eg2766

Conjugate:  
Unconjugated

Full name:  
elastin

Gene ID:  
2006

## Applications

Tested Applications:  
Sandwich ELISA

Range:  
62.5-4000 pg/mL (Sandwich ELISA)

Recommended Dilutions:  
It is recommended that this reagent should be titrated in each testing system to obtain optimal results.

## Product Information

MP02840-1 targets Elastin in immunoassays as a matched antibody pair. Validated in Sandwich ELISA.

Capture antibody: ELN Recombinant monoclonal antibody, PBS Only (Capture) 86483-3-PBS (251241G9). 100 µg. Concentration 1 mg/mL.

Detection antibody: ELN Recombinant monoclonal antibody, PBS Only (Detector) 86483-2-PBS (251241E6). 100 µg. Concentration 1 mg/mL.

Unconjugated rabbit recombinant monoclonal antibody pair in PBS only storage buffer at a concentration of 1 mg/mL, ready for conjugation. Created using Proteintech's proprietary in-house recombinant technology. Recombinant production enables unrivalled batch-to-batch consistency, easy scale-up, and future security of supply.

Matched antibody pairs are designed for use in a variety of assays and platforms that require matched antibody pairs.

Antibody use should be optimized for each application and assay.

## Storage

Storage:  
Store at -80°C.  
Storage buffer:  
PBS only

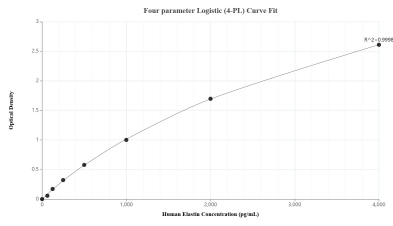
For technical support and original validation data for this product please contact:

T: 1 (888) 4PTGLAB (1-888-478-4522) (toll free in USA), or 1(312) 455-8498 (outside USA)

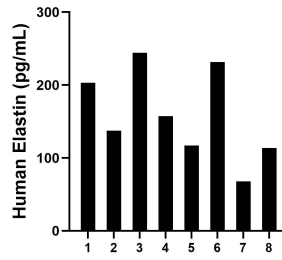
E: [proteintech@ptglab.com](mailto:proteintech@ptglab.com)  
W: [ptglab.com](http://ptglab.com)

This product is exclusively available under Proteintech Group brand and is not available to purchase from any other manufacturer.

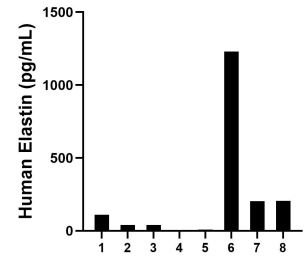
## Selected Validation Data



Sandwich ELISA standard curve of MP02840-1, Human Elastin Recombinant Matched Antibody Pair - PBS only. 86483-3-PBS was coated to a plate as the capture antibody and incubated with serial dilutions of standard Eg2766. 86483-2-PBS was HRP conjugated as the detection antibody. Range: 62.5-4000 pg/mL



Serum of eight individual healthy human donors was measured. The Elastin concentration of detected samples was determined to be 159.0 pg/mL with a range of 67.9-244.2 pg/mL.



Plasma of eight individual healthy human donors was measured. The Elastin concentration of detected samples was determined to be 229.7 pg/mL with a range of 0.2-1,230.6 pg/mL.