

# BRD3 Recombinant Matched Antibody Pair, PBS Only

Catalog Number: **MP02845-1**

## Capture Antibody Information

Catalog Number:  
87030-2-PBS

Host:  
Rabbit

Isotype:  
IgG

Purification Method:  
Protein A purification

Clone ID:  
252143B7

Reactivity:  
human

Immunogen Catalog Number:  
Ag2433

Conjugate:  
Unconjugated

Full name:  
bromodomain containing 3

Gene ID:  
8019

## Detection Antibody Information

Catalog Number:  
87030-1-PBS

Host:  
Rabbit

Isotype:  
IgG

Purification Method:  
Protein A purification

Clone ID:  
252143E12

Reactivity:  
human

GenBank:  
BC032124

Immunogen Catalog Number:  
Ag2433

Conjugate:  
Unconjugated

Full name:  
bromodomain containing 3

Gene ID:  
8019

## Applications

Tested Applications:  
Cytometric bead array

Range:  
0.312-40 ng/mL (Cytometric Bead Array)

Recommended Dilutions:  
It is recommended that this reagent should be titrated in each testing system to obtain optimal results.

## Product Information

MP02845-1 targets BRD3 in immunoassays as a matched antibody pair. Validated in Cytometric bead array.

Capture antibody: BRD3 Recombinant monoclonal antibody, PBS Only (Capture) 87030-2-PBS (252143B7). 100 µg. Concentration 1 mg/mL.

Detection antibody: BRD3 Recombinant monoclonal antibody, PBS Only (Detector) 87030-1-PBS (252143E12). 100 µg. Concentration 1 mg/mL.

Unconjugated rabbit recombinant monoclonal antibody pair in PBS only storage buffer at a concentration of 1 mg/mL, ready for conjugation. Created using Proteintech's proprietary in-house recombinant technology. Recombinant production enables unrivalled batch-to-batch consistency, easy scale-up, and future security of supply.

Matched antibody pairs are designed for use in a variety of assays and platforms that require matched antibody pairs.

Antibody use should be optimized for each application and assay.

## Storage

Storage:  
Store at -80°C.  
Storage buffer:  
PBS only

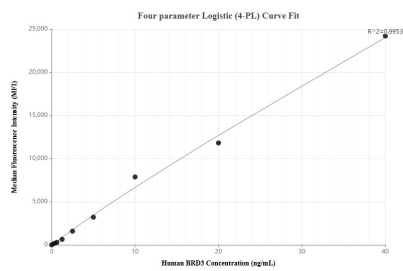
For technical support and original validation data for this product please contact:

T: 1 (888) 4PTGLAB (1-888-478-4522) (toll free in USA), or 1(312) 455-8498 (outside USA)

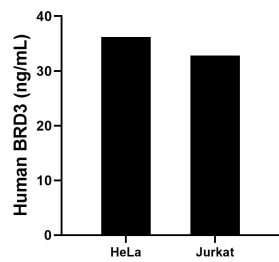
E: [proteintech@ptglab.com](mailto:proteintech@ptglab.com)  
W: [ptglab.com](http://ptglab.com)

**This product is exclusively available under Proteintech Group brand and is not available to purchase from any other manufacturer.**

## Selected Validation Data



Cytometric bead array standard curve of MP02845-1, BRD3 Recombinant Matched Antibody Pair, PBS Only. Capture antibody: 87030-2-PBS. Detection antibody: 87030-1-PBS. Standard: Ag2433. Range: 0.312-40 ng/mL



The mean BRD3 concentration was determined to be 36.2 ng/mL in HeLa cell extract based on a 1.2 mg/mL extract load, 32.8 ng/mL in Jurkat cell extract based on a 1.2 mg/mL extract load.