

SOX10 Recombinant Matched Antibody Pair, PBS Only

Catalog Number: **MP02850-1**

Capture Antibody Information

Catalog Number:
87051-2-PBS
Host:
Rabbit
Isotype:
IgG
Purification Method:
Protein A purification

Clone ID:
252024C7
Reactivity:
human
Immunogen Catalog Number:
Ag38090

Conjugate:
Unconjugated
Full name:
SRY (sex determining region Y)-box 10
Gene ID:
6663

Detection Antibody Information

Catalog Number:
87051-1-PBS
Host:
Rabbit
Isotype:
IgG
Purification Method:
Protein A purification

Clone ID:
252024C2
Reactivity:
human
GenBank:
BC002824
Immunogen Catalog Number:
Ag38090

Conjugate:
Unconjugated
Full name:
SRY (sex determining region Y)-box 10
Gene ID:
6663

Applications

Tested Applications:
Cytometric bead array

Range:
0.781-100 ng/mL (Cytometric Bead Array)

Recommended Dilutions:
It is recommended that this reagent should be titrated in each testing system to obtain optimal results.

Product Information

MP02850-1 targets SOX10 in immunoassays as a matched antibody pair. Validated in Cytometric bead array.

Capture antibody: SOX10 Recombinant monoclonal antibody, PBS Only (Capture) 87051-2-PBS (252024C7). 100 µg. Concentration 1 mg/mL.

Detection antibody: SOX10 Recombinant monoclonal antibody, PBS Only (Detector) 87051-1-PBS (252024C2). 100 µg. Concentration 1 mg/mL.

Unconjugated rabbit recombinant monoclonal antibody pair in PBS only storage buffer at a concentration of 1 mg/mL, ready for conjugation. Created using Proteintech's proprietary in-house recombinant technology. Recombinant production enables unrivalled batch-to-batch consistency, easy scale-up, and future security of supply.

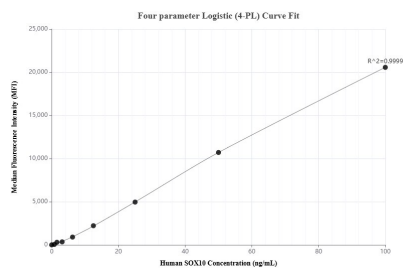
Matched antibody pairs are designed for use in a variety of assays and platforms that require matched antibody pairs.

Antibody use should be optimized for each application and assay.

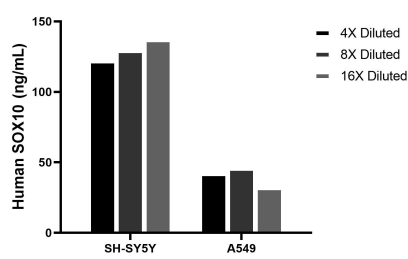
Storage

Storage:
Store at -80°C.
Storage buffer:
PBS only

Selected Validation Data



Cytometric bead array standard curve of MP02850-1, SOX10 Recombinant Matched Antibody Pair, PBS Only. Capture antibody: 87051-2-PBS. Detection antibody: 87051-1-PBS. Standard: Ag38090. Range: 0.781-100 ng/mL.



The mean SOX10 concentration was determined to be 129.3 ng/mL in SH-SY5Y cell extract based on a 1.2 mg/mL extract load, 41.3 ng/mL in A549 cell extract based on a 1.2 mg/mL extract load.