

For Research Use Only

WWTR1/TAZ Recombinant Matched Antibody Pair, PBS Only



Catalog Number:MP02851-1

Capture Antibody Information

Catalog Number:
85245-4-PBS
Host:
Rabbit
Isotype:
IgG
Purification Method:
Protein A purification

Clone ID:
252185A9
Reactivity:
human
Immunogen Catalog Number:
Eg6470

Conjugate:
Unconjugated
Full name:
WW domain containing transcription regulator 1
Gene ID:
25937

Detection Antibody Information

Catalog Number:
85245-3-PBS
Host:
Rabbit
Isotype:
IgG
Purification Method:
Protein A purification

Clone ID:
252185B9
Reactivity:
human
GenBank:
NM_001168278.2
Immunogen Catalog Number:
Eg6470

Conjugate:
Unconjugated
Full name:
WW domain containing transcription regulator 1
Gene ID:
25937

Applications

Tested Applications:
Cytometric bead array

Range:
0.312-40 ng/mL (Cytometric Bead Array)

Recommended Dilutions:
It is recommended that this reagent should be titrated in each testing system to obtain optimal results.

Product Information

MP02851-1 targets WWTR1/TAZ in immunoassays as a matched antibody pair. Validated in Cytometric bead array.

Capture antibody: WWTR1 Recombinant monoclonal antibody, PBS Only (Capture) 85245-4-PBS (252185A9). 100 µg. Concentration 1 mg/mL.

Detection antibody: WWTR1 Recombinant monoclonal antibody, PBS Only (Detector) 85245-3-PBS (252185B9). 100 µg. Concentration 1 mg/mL.

Unconjugated rabbit recombinant monoclonal antibody pair in PBS only storage buffer at a concentration of 1 mg/mL, ready for conjugation. Created using Proteintech's proprietary in-house recombinant technology. Recombinant production enables unrivalled batch-to-batch consistency, easy scale-up, and future security of supply.

Matched antibody pairs are designed for use in a variety of assays and platforms that require matched antibody pairs.

Antibody use should be optimized for each application and assay.

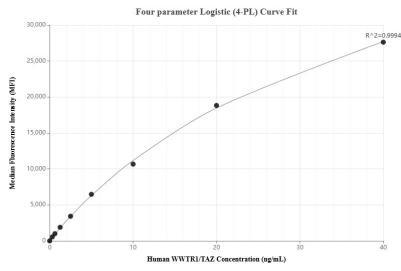
Storage

Storage:
Store at -80°C.
Storage buffer:
PBS only

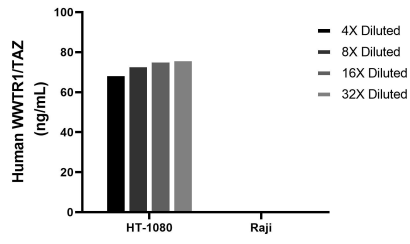
For technical support and original validation data for this product please contact:
T: 1 (888) 4PTGLAB (1-888-478-4522) (toll free in USA), or 1(312) 455-8498 (outside USA) E: proteintech@ptglab.com W: ptglab.com

This product is exclusively available under Proteintech Group brand and is not available to purchase from any other manufacturer.

Selected Validation Data



Cytometric bead array standard curve of MP02851-1, WWTR1/TAZ Recombinant Matched Antibody Pair, PBS Only. Capture antibody: 85245-4-PBS. Detection antibody: 85245-3-PBS. Standard: Eg6470. Range: 0.312-40 ng/mL.



The mean WWTR1/TAZ concentration was determined to be 73.9 ng/mL in HT-1080 cell extract based on a 1.2 mg/mL extract load, Raji cell extract were served as a negative control.