

# BIM/BCL2L11 Recombinant Matched Antibody Pair, PBS Only

Catalog Number: **MP02863-1**

## Capture Antibody Information

**Catalog Number:**

81976-3-PBS

**Host:**

Rabbit

**Isotype:**

IgG

**Purification Method:**

Protein A purification

**Clone ID:**

252250A2

**Reactivity:**

human

**Immunogen Catalog Number:**

Ag11875

**Conjugate:**

Unconjugated

**Full name:**

BCL2-like 11 (apoptosis facilitator)

**Gene ID:**

10018

## Detection Antibody Information

**Catalog Number:**

81976-2-PBS

**Host:**

Rabbit

**Isotype:**

IgG

**Purification Method:**

Protein A purification

**Clone ID:**

252250G4

**Reactivity:**

human

**GenBank:**

BC033694

**Immunogen Catalog Number:**

Ag11875

**Conjugate:**

Unconjugated

**Full name:**

BCL2-like 11 (apoptosis facilitator)

**Gene ID:**

10018

## Applications

**Tested Applications:**

Cytometric bead array

**Range:**

0.156-20 ng/mL (Cytometric Bead Array)

**Recommended Dilutions:**

It is recommended that this reagent should be titrated in each testing system to obtain optimal results.

## Product Information

MP02863-1 targets BIM/BCL2L11 in immunoassays as a matched antibody pair. Validated in Cytometric bead array.

Capture antibody: BIM, BCL2L11 Recombinant monoclonal antibody, PBS Only (Capture) 81976-3-PBS (252250A2). 100 µg. Concentration 1 mg/mL.

Detection antibody: BIM, BCL2L11 Recombinant monoclonal antibody, PBS Only (Detector) 81976-2-PBS (252250G4). 100 µg. Concentration 1 mg/mL.

Unconjugated rabbit recombinant monoclonal antibody pair in PBS only storage buffer at a concentration of 1 mg/mL, ready for conjugation. Created using Proteintech's proprietary in-house recombinant technology. Recombinant production enables unrivalled batch-to-batch consistency, easy scale-up, and future security of supply.

Matched antibody pairs are designed for use in a variety of assays and platforms that require matched antibody pairs.

Antibody use should be optimized for each application and assay.

## Storage

**Storage:**

Store at -80°C.

**Storage buffer:**

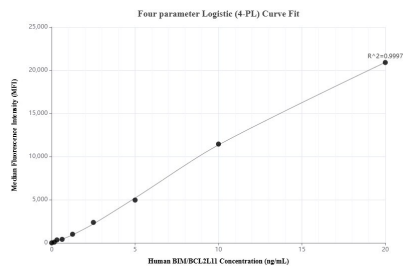
PBS only

For technical support and original validation data for this product please contact:

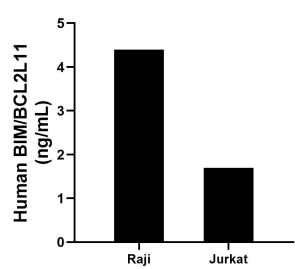
T: 1 (888) 4PTGLAB (1-888-478-4522) (toll free in USA), or 1(312) 455-8498 (outside USA)

E: [proteintech@ptglab.com](mailto:proteintech@ptglab.com)  
W: [ptglab.com](http://ptglab.com)**This product is exclusively available under Proteintech Group brand and is not available to purchase from any other manufacturer.**

## Selected Validation Data



Cytometric bead array standard curve of MP02863-1, BIM/BCL2L11 Recombinant Matched Antibody Pair, PBS Only. Capture antibody: 81976-3-PBS. Detection antibody: 81976-2-PBS. Standard: Ag11875. Range: 0.156-20 ng/mL.



The mean BIM/BCL2L11 concentration was determined to be 4.4 ng/mL in Raji cell extract based on a 1.3 mg/mL extract load, 1.7 ng/mL in Jurkat cell extract based on a 1.2 mg/mL extract load.