

For Research Use Only

MUC13 Recombinant Matched Antibody Pair, PBS Only



Catalog Number:MP02867-2

Capture Antibody Information

Catalog Number:
87107-3-PBS

Host:
Rabbit

Isotype:
IgG

Purification Method:
Protein A purification

Clone ID:
252211F7

Reactivity:
human

Immunogen Catalog Number:
Eg6586

Conjugate:
Unconjugated

Full name:
mucin 13, cell surface associated

Gene ID:
56667

Detection Antibody Information

Catalog Number:
87107-1-PBS

Host:
Rabbit

Isotype:
IgG

Purification Method:
Protein A purification

Clone ID:
252211G2

Reactivity:
human

GenBank:
NM_033049.4

Immunogen Catalog Number:
Eg6586

Conjugate:
Unconjugated

Full name:
mucin 13, cell surface associated

Gene ID:
56667

Applications

Tested Applications:
Sandwich ELISA

Range:
0.625-20 ng/mL (Sandwich ELISA)

Recommended Dilutions:
It is recommended that this reagent should be titrated in each testing system to obtain optimal results.

Product Information

MP02867-2 targets MUC13 in immunoassays as a matched antibody pair. Validated in Sandwich ELISA.

Capture antibody: MUC13 Recombinant monoclonal antibody, PBS Only (Capture) 87107-3-PBS (252211F7). 100 µg. Concentration 1 mg/mL.

Detection antibody: MUC13 Recombinant monoclonal antibody, PBS Only (Detector) 87107-1-PBS (252211G2). 100 µg. Concentration 1 mg/mL.

Unconjugated rabbit recombinant monoclonal antibody pair in PBS only storage buffer at a concentration of 1 mg/mL, ready for conjugation. Created using Proteintech's proprietary in-house recombinant technology. Recombinant production enables unrivalled batch-to-batch consistency, easy scale-up, and future security of supply.

Matched antibody pairs are designed for use in a variety of assays and platforms that require matched antibody pairs.

Antibody use should be optimized for each application and assay.

Storage

Storage:
Store at -80°C.
Storage buffer:
PBS only

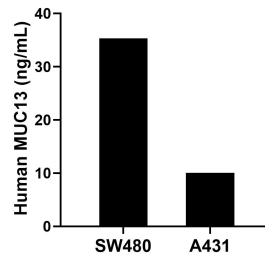
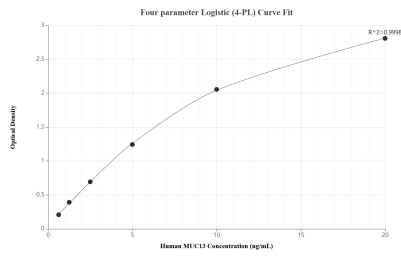
For technical support and original validation data for this product please contact:

T: 1 (888) 4PTGLAB (1-888-478-4522) (toll free in USA), or 1(312) 455-8498 (outside USA)

E: proteintech@ptglab.com
W: ptglab.com

This product is exclusively available under Proteintech Group brand and is not available to purchase from any other manufacturer.

Selected Validation Data



Sandwich ELISA standard curve of MP02867-2, Human MUC13 Recombinant Matched Antibody Pair - PBS only. 87107-3-PBS was coated to a plate as the capture antibody and incubated with serial dilutions of standard Eg6586. 87107-1-PBS was HRP conjugated as the detection antibody. Range: 0.625-20 ng/mL.

The mean MUC13 concentration was determined to be 35.32 ng/mL in SW480 cell extract based on a 1.20 mg/mL extract load and 10.04 ng/mL in A431 cell extract based on a 1.20 mg/mL extract load.