

For Research Use Only

# KAT6B/MORF Recombinant Matched Antibody Pair, PBS Only



Catalog Number:MP02869-2

## Capture Antibody Information

**Catalog Number:**  
86962-11-PBS  
**Host:**  
Rabbit  
**Isotype:**  
IgG  
**Purification Method:**  
Protein A purification

**Clone ID:**  
253286E11  
**Reactivity:**  
human

**Conjugate:**  
Unconjugated  
**Full name:**  
MYST histone acetyltransferase (monocytic leukemia) 4  
**Gene ID:**  
23522

## Detection Antibody Information

**Catalog Number:**  
86962-10-PBS  
**Host:**  
Rabbit  
**Isotype:**  
IgG  
**Purification Method:**  
Protein A purification

**Clone ID:**  
253286C7  
**Reactivity:**  
human  
**GenBank:**  
BC150618

**Conjugate:**  
Unconjugated  
**Full name:**  
MYST histone acetyltransferase (monocytic leukemia) 4  
**Gene ID:**  
23522

## Applications

**Tested Applications:**  
Sandwich ELISA

**Range:**  
39.1-2500 pg/mL (Sandwich ELISA)

**Recommended Dilutions:**  
It is recommended that this reagent should be titrated in each testing system to obtain optimal results.

## Product Information

MP02869-2 targets KAT6B/MORF in immunoassays as a matched antibody pair. Validated in Sandwich ELISA.

Capture antibody: MYST4 Recombinant monoclonal antibody, PBS Only (Capture) 86962-11-PBS (253286E11). 100 µg. Concentration 1 mg/mL.

Detection antibody: MYST4 Recombinant monoclonal antibody, PBS Only (Detector) 86962-10-PBS (253286C7). 100 µg. Concentration 1 mg/mL.

Unconjugated rabbit recombinant monoclonal antibody pair in PBS only storage buffer at a concentration of 1 mg/mL, ready for conjugation. Created using Proteintech's proprietary in-house recombinant technology. Recombinant production enables unrivalled batch-to-batch consistency, easy scale-up, and future security of supply.

Matched antibody pairs are designed for use in a variety of assays and platforms that require matched antibody pairs.

Antibody use should be optimized for each application and assay.

## Storage

**Storage:**  
Store at -80°C.  
**Storage buffer:**  
PBS only

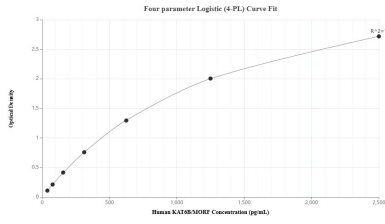
For technical support and original validation data for this product please contact:

T: 1 (888) 4PTGLAB (1-888-478-4522) (toll free in USA), or 1(312) 455-8498 (outside USA)

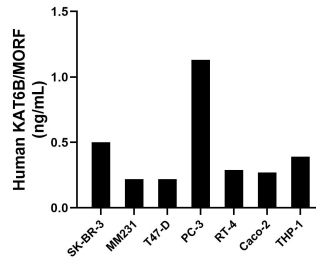
E: [proteintech@ptglab.com](mailto:proteintech@ptglab.com)  
W: [ptglab.com](http://ptglab.com)

**This product is exclusively available under Proteintech Group brand and is not available to purchase from any other manufacturer.**

## Selected Validation Data



Sandwich ELISA standard curve of MP02869-2, Human KAT6B/MORF Recombinant Matched Antibody Pair - PBS only. 86962-11-PBS was coated to a plate as the capture antibody and incubated with serial dilutions of standard SY03010. 86962-10-PBS was HRP conjugated as the detection antibody. Range: 39.1-2500 pg/mL



The mean KAT6B/MORF concentration was determined to be 0.51 ng/mL in SK-BR-3 cell extract based on a 1.2 mg/mL extract load, 0.22 ng/mL in MM231 cell extract based on a 1.2 mg/mL extract load, 0.22 ng/mL in T47-D cell extract based on a 1.2 mg/mL extract load, 1.13 ng/mL in PC-3 cell extract based on a 1.5 mg/mL extract load, 0.29 ng/mL in RT-4 cell extract based on a 1.5 mg/mL extract load, 0.27 ng/mL in CaCO-2 cell extract based on a 1.2 mg/mL extract load

