

For Research Use Only

BMX Recombinant Matched Antibody Pair, PBS Only



Catalog Number:MP02871-1

Capture Antibody Information

Catalog Number:
87023-3-PBS

Host:
Rabbit

Isotype:
IgG

Purification Method:
Protein A purification

Clone ID:
252193F11

Reactivity:
human

Immunogen Catalog Number:
Ag26407

Conjugate:
Unconjugated

Full name:
BMX non-receptor tyrosine kinase

Gene ID:
660

Detection Antibody Information

Catalog Number:
87023-2-PBS

Host:
Rabbit

Isotype:
IgG

Purification Method:
Protein A purification

Clone ID:
252193D1

Reactivity:
human

GenBank:
BC016652

Immunogen Catalog Number:
Ag26407

Conjugate:
Unconjugated

Full name:
BMX non-receptor tyrosine kinase

Gene ID:
660

Applications

Tested Applications:
Sandwich ELISA

Range:
0.313-20 ng/mL (Sandwich ELISA)

Recommended Dilutions:
It is recommended that this reagent should be titrated in each testing system to obtain optimal results.

Product Information

MP02871-1 targets BMX in immunoassays as a matched antibody pair. Validated in Sandwich ELISA.

Capture antibody: BMX Recombinant monoclonal antibody, PBS Only (Capture) 87023-3-PBS (252193F11). 100 µg. Concentration 1 mg/mL.

Detection antibody: BMX Recombinant monoclonal antibody, PBS Only (Detector) 87023-2-PBS (252193D1). 100 µg. Concentration 1 mg/mL.

Unconjugated rabbit recombinant monoclonal antibody pair in PBS only storage buffer at a concentration of 1 mg/mL, ready for conjugation. Created using Proteintech's proprietary in-house recombinant technology. Recombinant production enables unrivalled batch-to-batch consistency, easy scale-up, and future security of supply.

Matched antibody pairs are designed for use in a variety of assays and platforms that require matched antibody pairs.

Antibody use should be optimized for each application and assay.

Storage

Storage:
Store at -80°C.
Storage buffer:
PBS only

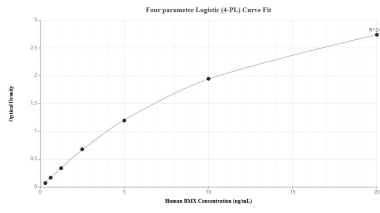
For technical support and original validation data for this product please contact:

T: 1 (888) 4PTGLAB (1-888-478-4522) (toll free in USA), or 1(312) 455-8498 (outside USA)

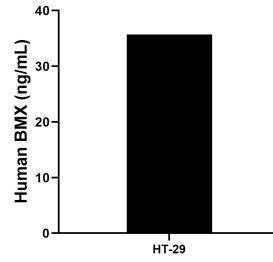
E: proteintech@ptglab.com
W: ptglab.com

This product is exclusively available under Proteintech Group brand and is not available to purchase from any other manufacturer.

Selected Validation Data



Sandwich ELISA standard curve of MP02871-1, Human BMX Recombinant Matched Antibody Pair - PBS only. 87023-3-PBS was coated to a plate as the capture antibody and incubated with serial dilutions of standard Ag26407. 87023-2-PBS was HRP conjugated as the detection antibody. Range: 0.313-20 ng/mL



The mean BMX concentration was determined to be 35.71 ng/mL in HT-29 cell extract based on a 1.5 mg/mL extract load.