

For Research Use Only

ENPP-2/Autotaxin Recombinant Matched Antibody Pair, PBS Only



Catalog Number:MP02884-1

Capture Antibody Information

Catalog Number:
82789-10-PBS

Host:
Rabbit

Isotype:
IgG

Purification Method:
Protein A purification

Clone ID:
252235F1

Reactivity:
human

Immunogen Catalog Number:
Eg7267

Conjugate:
Unconjugated

Full name:
ectonucleotide
pyrophosphatase/phosphodiesterase
2

Gene ID:
5168

Detection Antibody Information

Catalog Number:
82789-9-PBS

Host:
Rabbit

Isotype:
IgG

Purification Method:
Protein A purification

Clone ID:
252235E11

Reactivity:
human

GenBank:
NM_001040092.3

Immunogen Catalog Number:
Eg7267

Conjugate:
Unconjugated

Full name:
ectonucleotide
pyrophosphatase/phosphodiesterase
2

Gene ID:
5168

Applications

Tested Applications:
Cytometric bead array, Sandwich
ELISA

Range:
0.312-40 ng/mL (Cytometric Bead
Array)
62.5-4000 pg/mL (Sandwich ELISA)

Recommended Dilutions:
It is recommended that this reagent
should be titrated in each testing
system to obtain optimal results.

Product Information

MP02884-1 targets ENPP-2/Autotaxin in immunoassays as a matched antibody pair. Validated in Cytometric bead array, Sandwich ELISA.

Capture antibody: ENPP-2/Autotaxin Recombinant monoclonal antibody, PBS Only (Capture) 82789-10-PBS (252235F1). 100 µg. Concentration 1 mg/ml.

Detection antibody: ENPP-2/Autotaxin Recombinant monoclonal antibody, PBS Only (Detector) 82789-9-PBS (252235E11). 100 µg. Concentration 1 mg/ml.

Unconjugated rabbit recombinant monoclonal antibody pair in PBS only storage buffer at a concentration of 1 mg/mL, ready for conjugation. Created using Proteintech's proprietary in-house recombinant technology. Recombinant production enables unrivalled batch-to-batch consistency, easy scale-up, and future security of supply.

Matched antibody pairs are designed for use in a variety of assays and platforms that require matched antibody pairs.

Antibody use should be optimized for each application and assay.

Storage

Storage:
Store at -80°C.
Storage buffer:
PBS only

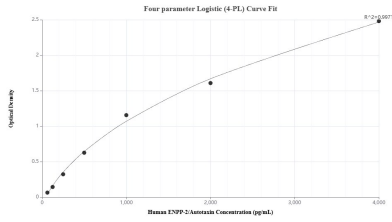
For technical support and original validation data for this product please contact:

T: 1 (888) 4PTGLAB (1-888-478-4522) (toll free
in USA), or 1(312) 455-8498 (outside USA)

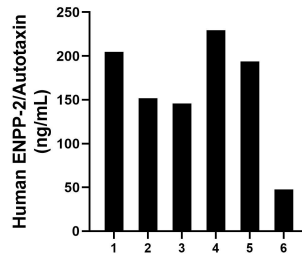
E: proteintech@ptglab.com
W: ptglab.com

This product is exclusively available under Proteintech Group brand and is not available to purchase from any other manufacturer.

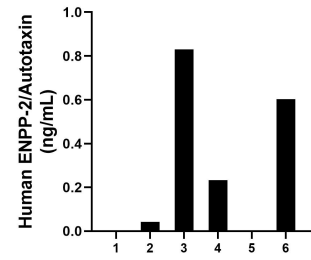
Selected Validation Data



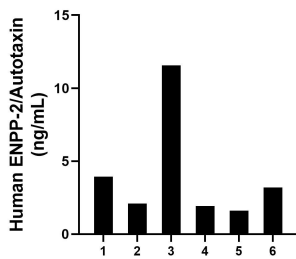
Sandwich ELISA standard curve of MP02884-1, Human ENPP-2/Autotaxin Recombinant Matched Antibody Pair - PBS only. 82789-10-PBS was coated to a plate as the capture antibody and incubated with serial dilutions of standard Eg7267. 82789-9-PBS was HRP conjugated as the detection antibody. Range: 362.5-4000 pg/mL



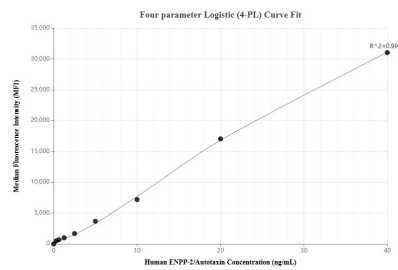
Plasma of six individual healthy human donors was measured. The human ENPP-2/Autotaxin concentration of detected samples was determined to be 162.15 ng/mL with a range of 47.54 - 229.51 ng/mL



Urine of six individual healthy human donors was measured. The human ENPP-2/Autotaxin concentration of detected samples was determined to be 0.43 ng/mL with a range of 0 - 0.83 ng/mL



Human milk of six individual healthy human donors was measured. The human ENPP-2/Autotaxin concentration of detected samples was determined to be 4.06 ng/mL with a range of 1.61 - 11.57 ng/mL



The mean ENPP-2/Autotaxin concentration was determined to be 325.7 ng/mL in human plasma.

Cytometric bead array standard curve of MP02884-1, ENPP-2/Autotaxin Recombinant Matched Antibody Pair, PBS Only. Capture antibody: 82789-10-PBS. Detection antibody: 82789-9-PBS. Standard: Eg7267. Range: 0.312-40 ng/mL