

For Research Use Only

SERPINA7/TBG Recombinant Matched Antibody Pair, PBS Only



Catalog Number:MP02888-1

Capture Antibody Information

Catalog Number:
86893-3-PBS
Host:
Rabbit
Isotype:
IgG
Purification Method:
Protein A purification

Clone ID:
251961D3
Reactivity:
human
Immunogen Catalog Number:
Eg3062

Conjugate:
Unconjugated
Full name:
serpin peptidase inhibitor, clade A (alpha-1 antiproteinase, antitrypsin), member 7
Gene ID:
6906

Detection Antibody Information

Catalog Number:
86893-2-PBS
Host:
Rabbit
Isotype:
IgG
Purification Method:
Protein A purification

Clone ID:
251961C9
Reactivity:
human
GenBank:
NM_000354.5
Immunogen Catalog Number:
Eg3062

Conjugate:
Unconjugated
Full name:
serpin peptidase inhibitor, clade A (alpha-1 antiproteinase, antitrypsin), member 7
Gene ID:
6906

Applications

Tested Applications:
Sandwich ELISA

Range:
78.1-5000 pg/mL (Sandwich ELISA)

Recommended Dilutions:
It is recommended that this reagent should be titrated in each testing system to obtain optimal results.

Product Information

MP02888-1 targets SERPINA7/TBG in immunoassays as a matched antibody pair. Validated in Sandwich ELISA.
Capture antibody: SERPINA7 Recombinant monoclonal antibody, PBS Only (Capture) 86893-3-PBS (251961D3). 100 µg. Concentration 1 mg/mL.
Detection antibody: SERPINA7 Recombinant monoclonal antibody, PBS Only (Detector) 86893-2-PBS (251961C9). 100 µg. Concentration 1 mg/mL.
Unconjugated rabbit recombinant monoclonal antibody pair in PBS only storage buffer at a concentration of 1 mg/mL, ready for conjugation. Created using Proteintech's proprietary in-house recombinant technology. Recombinant production enables unrivalled batch-to-batch consistency, easy scale-up, and future security of supply.
Matched antibody pairs are designed for use in a variety of assays and platforms that require matched antibody pairs.
Antibody use should be optimized for each application and assay.

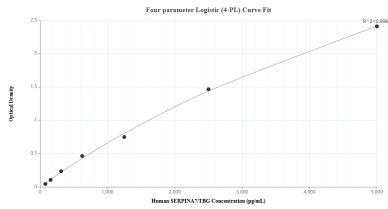
Storage

Storage:
Store at -80°C.
Storage buffer:
PBS only

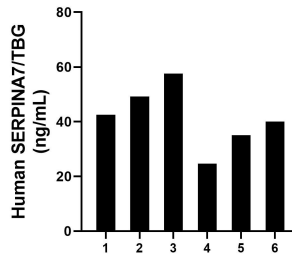
For technical support and original validation data for this product please contact:
T: 1 (888) 4PTGLAB (1-888-478-4522) (toll free in USA), or 1(312) 455-8498 (outside USA) E: proteintech@ptglab.com
W: ptglab.com

This product is exclusively available under Proteintech Group brand and is not available to purchase from any other manufacturer.

Selected Validation Data



Sandwich ELISA standard curve of MP02888-1, Human SERPINA7/TBG Recombinant Matched Antibody Pair - PBS only. 86893-3-PBS was coated to a plate as the capture antibody and incubated with serial dilutions of standard Eg3062. 86893-2-PBS was HRP conjugated as the detection antibody. Range: 78.1-5000 pg/mL



Plasma of six individual healthy human donors was measured. The human SERPINA7/TBG concentration of detected samples was determined to be 41.52 ng/mL with a range of 24.73 - 57.60 ng/mL