

For Research Use Only

CLPP Recombinant Matched Antibody Pair, PBS Only



Catalog Number:MP02909-2

Capture Antibody Information

Catalog Number:
87187-3-PBS
Host:
Rabbit
Isotype:
IgG
Purification Method:
Protein A purification

Clone ID:
252470B7
Reactivity:
human, mouse, rat
Immunogen Catalog Number:
Ag8325

Conjugate:
Unconjugated
Full name:
ClpP caseinolytic peptidase, ATP-dependent, proteolytic subunit homolog (E. coli)
Gene ID:
8192

Detection Antibody Information

Catalog Number:
87187-2-PBS
Host:
Rabbit
Isotype:
IgG
Purification Method:
Protein A purification

Clone ID:
252470H2
Reactivity:
human
GenBank:
BC002956
Immunogen Catalog Number:
Ag8325

Conjugate:
Unconjugated
Full name:
ClpP caseinolytic peptidase, ATP-dependent, proteolytic subunit homolog (E. coli)
Gene ID:
8192

Applications

Tested Applications:
Sandwich ELISA

Range:
78.1-5000 pg/mL (Sandwich ELISA)

Recommended Dilutions:
It is recommended that this reagent should be titrated in each testing system to obtain optimal results.

Product Information

MP02909-2 targets CLPP in immunoassays as a matched antibody pair. Validated in Sandwich ELISA.

Capture antibody: CLPP Recombinant monoclonal antibody, PBS Only (Capture) 87187-3-PBS (252470B7). 100 µg. Concentration 1 mg/mL.

Detection antibody: CLPP Recombinant monoclonal antibody, PBS Only (Capture/Detector) 87187-2-PBS (252470H2). 100 µg. Concentration 1 mg/mL.

Unconjugated rabbit recombinant monoclonal antibody pair in PBS only storage buffer at a concentration of 1 mg/mL, ready for conjugation. Created using Proteintech's proprietary in-house recombinant technology. Recombinant production enables unrivalled batch-to-batch consistency, easy scale-up, and future security of supply.

Matched antibody pairs are designed for use in a variety of assays and platforms that require matched antibody pairs.

Antibody use should be optimized for each application and assay.

Storage

Storage:
Store at -80°C.
Storage buffer:
PBS only

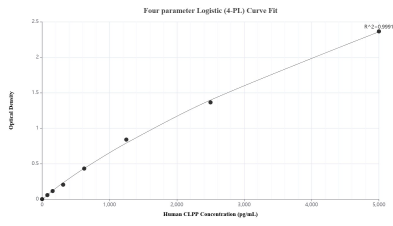
For technical support and original validation data for this product please contact:

T: 1 (888) 4PTGLAB (1-888-478-4522) (toll free in USA), or 1(312) 455-8498 (outside USA)

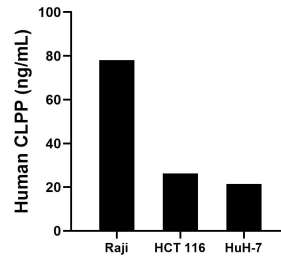
E: proteintech@ptglab.com
W: ptglab.com

This product is exclusively available under Proteintech Group brand and is not available to purchase from any other manufacturer.

Selected Validation Data



Sandwich ELISA standard curve of MP02909-2, Human CLPP Recombinant Matched Antibody Pair - PBS only. 87187-3-PBS was coated to a plate as the capture antibody and incubated with serial dilutions of standard Ag8325. 87187-2-PBS was HRP conjugated as the detection antibody. Range: 78.1-5000 pg/mL



The mean CLPP concentration was determined to be 78.1 ng/mL in Raji cell extract based on a 1.2 mg/mL extract load, 26.3 ng/mL in HCT 116 cell extract based on a 1.2 mg/mL extract load and 21.4 ng/mL in HuH-7 cell extract based on a 1.2 mg/mL extract load.