

MINPP1 Recombinant Matched Antibody Pair, PBS Only

Catalog Number:MP02914-1

Capture Antibody Information

Catalog Number:
87117-3-PBS
Host:
Rabbit
Isotype:
IgG
Purification Method:
Protein A purification

Clone ID:
252180B3
Reactivity:
human
Immunogen Catalog Number:
Eg6070

Conjugate:
Unconjugated
Full name:
multiple inositol polyphosphate histidine phosphatase, 1
Gene ID:
9562

Detection Antibody Information

Catalog Number:
87117-2-PBS
Host:
Rabbit
Isotype:
IgG
Purification Method:
Protein A purification

Clone ID:
252180H1
Reactivity:
human
GenBank:
NM_004897.5
Immunogen Catalog Number:
Eg6070

Conjugate:
Unconjugated
Full name:
multiple inositol polyphosphate histidine phosphatase, 1
Gene ID:
9562

Applications

Tested Applications:
Cytometric bead array

Range:
0.312-40 ng/mL (Cytometric Bead Array)

Recommended Dilutions:
It is recommended that this reagent should be titrated in each testing system to obtain optimal results.

Product Information

MP02914-1 targets MINPP1 in immunoassays as a matched antibody pair. Validated in Cytometric bead array.

Capture antibody: MINPP1 Recombinant monoclonal antibody, PBS Only (Capture) 87117-3-PBS (252180B3). 100 µg. Concentration 1 mg/mL.

Detection antibody: MINPP1 Recombinant monoclonal antibody, PBS Only (Detector) 87117-2-PBS (252180H1). 100 µg. Concentration 1 mg/mL.

Unconjugated rabbit recombinant monoclonal antibody pair in PBS only storage buffer at a concentration of 1 mg/mL, ready for conjugation. Created using Proteintech's proprietary in-house recombinant technology. Recombinant production enables unrivalled batch-to-batch consistency, easy scale-up, and future security of supply.

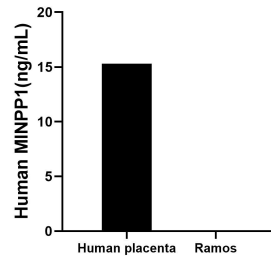
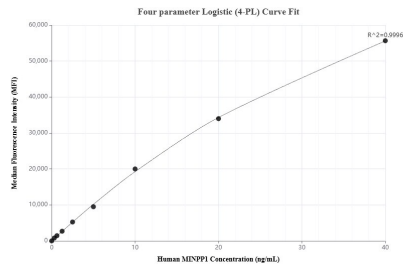
Matched antibody pairs are designed for use in a variety of assays and platforms that require matched antibody pairs.

Antibody use should be optimized for each application and assay.

Storage

Storage:
Store at -80°C.
Storage buffer:
PBS only

Selected Validation Data



Cytometric bead array standard curve of MP02914-1, MINPP1 Recombinant Matched Antibody Pair, PBS Only. Capture antibody: 87117-3-PBS. Detection antibody: 87117-2-PBS. Standard: Eg6070. Range: 0.312-40 ng/mL

The mean MINPP1 concentration was determined to be 15.3 ng/mL in human placenta cell extract based on a 3.8 mg/mL extract load, Ramos cell extract were served as a negative control.