

For Research Use Only

XRCC1 Recombinant Matched Antibody Pair, PBS Only



Catalog Number:MP02931-1

Capture Antibody Information

Catalog Number:
87251-3-PBS
Host:
Rabbit
Isotype:
IgG
Purification Method:
Protein A purification

Clone ID:
252518A12
Reactivity:
human
Immunogen Catalog Number:
Ag15172

Conjugate:
Unconjugated
Full name:
X-ray repair complementing defective repair in Chinese hamster cells 1
Gene ID:
7515

Detection Antibody Information

Catalog Number:
87251-2-PBS
Host:
Rabbit
Isotype:
IgG
Purification Method:
Protein A purification

Clone ID:
252518C12
Reactivity:
human
GenBank:
BC023593
Immunogen Catalog Number:
Ag15172

Conjugate:
Unconjugated
Full name:
X-ray repair complementing defective repair in Chinese hamster cells 1
Gene ID:
7515

Applications

Tested Applications:
Cytometric bead array

Range:
0.625-40 ng/mL (Cytometric Bead Array)

Recommended Dilutions:
It is recommended that this reagent should be titrated in each testing system to obtain optimal results.

Product Information

MP02931-1 targets XRCC1 in immunoassays as a matched antibody pair. Validated in Cytometric bead array.

Capture antibody: XRCC1 Recombinant monoclonal antibody, PBS Only (Capture) 87251-3-PBS (252518A12). 100 µg. Concentration 1 mg/mL.

Detection antibody: XRCC1 Recombinant monoclonal antibody, PBS Only (Detector) 87251-2-PBS (252518C12). 100 µg. Concentration 1 mg/mL.

Unconjugated rabbit recombinant monoclonal antibody pair in PBS only storage buffer at a concentration of 1 mg/mL, ready for conjugation. Created using Proteintech's proprietary in-house recombinant technology. Recombinant production enables unrivalled batch-to-batch consistency, easy scale-up, and future security of supply.

Matched antibody pairs are designed for use in a variety of assays and platforms that require matched antibody pairs.

Antibody use should be optimized for each application and assay.

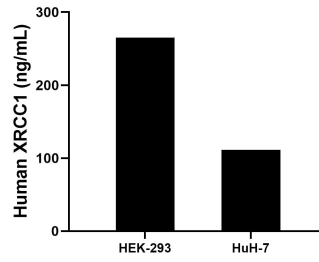
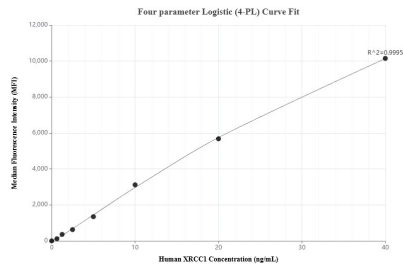
Storage

Storage:
Store at -80°C.
Storage buffer:
PBS only

For technical support and original validation data for this product please contact:
T: 1 (888) 4PTGLAB (1-888-478-4522) (toll free in USA), or 1(312) 455-8498 (outside USA) E: proteintech@ptglab.com W: ptglab.com

This product is exclusively available under Proteintech Group brand and is not available to purchase from any other manufacturer.

Selected Validation Data



Cytometric bead array standard curve of MPO2931-1, XRCC1 Recombinant Matched Antibody Pair, PBS Only. Capture antibody: 87251-3-PBS. Detection antibody: 87251-2-PBS. Standard: Ag15172. Range: 0.625-40 ng/mL

The mean XRCC1 concentration was determined to be 265.1 ng/mL in HEK-293 cell extract based on a 1.2 mg/mL extract load, 111.2 ng/mL in HuH-7 cell extract based on a 1.2 mg/mL extract load.