

For Research Use Only

CHMP2B Recombinant Matched Antibody Pair, PBS Only



Catalog Number:MP02936-1

Capture Antibody Information

Catalog Number:

87151-3-PBS

Host:

Rabbit

Isotype:

IgG

Purification Method:

Protein A purification

Clone ID:

252352F7

Reactivity:

human

Immunogen Catalog Number:

Ag3222

Conjugate:

Unconjugated

Full name:

chromatin modifying protein 2B

Gene ID:

25978

Detection Antibody Information

Catalog Number:

87151-2-PBS

Host:

Rabbit

Isotype:

IgG

Purification Method:

Protein A purification

Clone ID:

252352E2

Reactivity:

human

GenBank:

BC001553

Immunogen Catalog Number:

Ag3222

Conjugate:

Unconjugated

Full name:

chromatin modifying protein 2B

Gene ID:

25978

Applications

Tested Applications:

Sandwich ELISA

Range:

1.56-100 ng/mL (Sandwich ELISA)

Recommended Dilutions:

It is recommended that this reagent should be titrated in each testing system to obtain optimal results.

Product Information

MP02936-1 targets CHMP2B in immunoassays as a matched antibody pair. Validated in Sandwich ELISA.

Capture antibody: CHMP2B Recombinant monoclonal antibody, PBS Only (Capture) 87151-3-PBS (252352F7). 100 µg. Concentration 1 mg/mL.

Detection antibody: CHMP2B Recombinant monoclonal antibody, PBS Only (Detector) 87151-2-PBS (252352E2). 100 µg. Concentration 1 mg/mL.

Unconjugated rabbit recombinant monoclonal antibody pair in PBS only storage buffer at a concentration of 1 mg/mL, ready for conjugation. Created using Proteintech's proprietary in-house recombinant technology. Recombinant production enables unrivalled batch-to-batch consistency, easy scale-up, and future security of supply.

Matched antibody pairs are designed for use in a variety of assays and platforms that require matched antibody pairs.

Antibody use should be optimized for each application and assay.

Storage

Storage:

Store at -80°C.

Storage buffer:

PBS only

For technical support and original validation data for this product please contact:

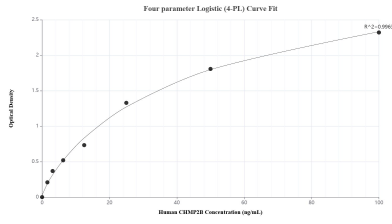
T: 1 (888) 4PTGLAB (1-888-478-4522) (toll free in USA), or 1(312) 455-8498 (outside USA)

E: proteintech@ptglab.com

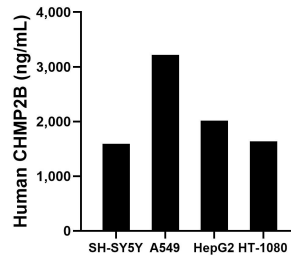
W: ptglab.com

This product is exclusively available under Proteintech Group brand and is not available to purchase from any other manufacturer.

Selected Validation Data



Sandwich ELISA standard curve of MP02936-1, Human CHMP2B Recombinant Matched Antibody Pair - PBS only. 87151-3-PBS was coated to a plate as the capture antibody and incubated with serial dilutions of standard Ag3222. 87151-2-PBS was HRP conjugated as the detection antibody. Range: 1.56-100 ng/mL.



The mean CHMP2B concentration was determined to be 1,591.69 ng/mL in SH-SY5Y cell extract based on a 1.20 mg/mL extract load, 3,218.99 ng/mL in A549 cell extract based on a 1.20 mg/mL extract load, 2,013.37 ng/mL in HepG2 cell extract based on a 1.20 mg/mL extract load and 1,636.28 ng/mL in HT-1080 cell extract based on a 1.20 mg/mL extract load.