

For Research Use Only

IgG3 Recombinant Matched Antibody Pair, PBS Only



Catalog Number:MP02949-2

Capture Antibody Information

Catalog Number:
87288-4-PBS
Host:
Rabbit
Isotype:
IgG
Purification Method:
Protein A purification

Clone ID:
251290E11
Reactivity:
human
Immunogen Catalog Number:
Eg6674

Conjugate:
Unconjugated
Full name:
immunoglobulin heavy constant gamma 3 (G3m marker)
Gene ID:
3502

Detection Antibody Information

Catalog Number:
87288-3-PBS
Host:
Rabbit
Isotype:
IgG
Purification Method:
Protein A purification

Clone ID:
251300A11
Reactivity:
human
GenBank:
Immunogen Catalog Number:
Eg6674

Conjugate:
Unconjugated
Full name:
immunoglobulin heavy constant gamma 3 (G3m marker)
Gene ID:
3502

Applications

Tested Applications:
Sandwich ELISA

Range:
0.313-20 ng/mL (Sandwich ELISA)

Recommended Dilutions:
It is recommended that this reagent should be titrated in each testing system to obtain optimal results.

Product Information

MP02949-2 targets IgG3 in immunoassays as a matched antibody pair. Validated in Sandwich ELISA.

Capture antibody: Human IgG3 Recombinant monoclonal antibody, PBS Only (Capture) 87288-4-PBS (251290E11). 100 µg. Concentration 1 mg/mL.

Detection antibody: Human IgG3 Recombinant monoclonal antibody, PBS Only (Detector) 87288-3-PBS (251300A11). 100 µg. Concentration 1 mg/mL.

Unconjugated rabbit recombinant monoclonal antibody pair in PBS only storage buffer at a concentration of 1 mg/mL, ready for conjugation. Created using Proteintech's proprietary in-house recombinant technology. Recombinant production enables unrivalled batch-to-batch consistency, easy scale-up, and future security of supply.

Matched antibody pairs are designed for use in a variety of assays and platforms that require matched antibody pairs.

Antibody use should be optimized for each application and assay.

Storage

Storage:
Store at -80°C.
Storage buffer:
PBS only

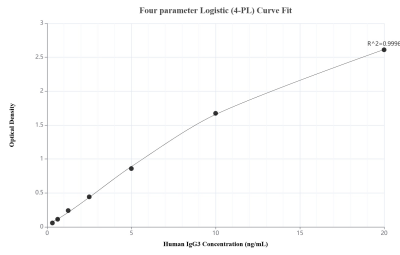
For technical support and original validation data for this product please contact:

T: 1 (888) 4PTGLAB (1-888-478-4522) (toll free in USA), or 1(312) 455-8498 (outside USA)

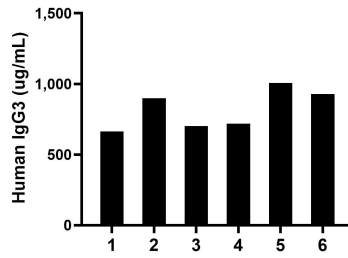
E: proteintech@ptglab.com
W: ptglab.com

This product is exclusively available under Proteintech Group brand and is not available to purchase from any other manufacturer.

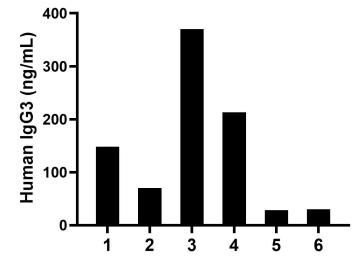
Selected Validation Data



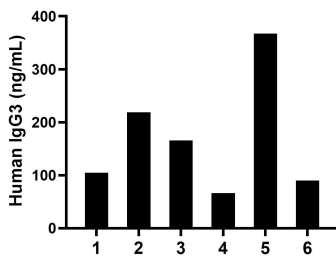
Sandwich ELISA standard curve of MP02949-2, Human IgG3 Recombinant Matched Antibody Pair - PBS only. 87288-4-PBS was coated to a plate as the capture antibody and incubated with serial dilutions of standard Eg6674. 87288-3-PBS was HRP conjugated as the detection antibody. Range: 0.313-20 ng/mL



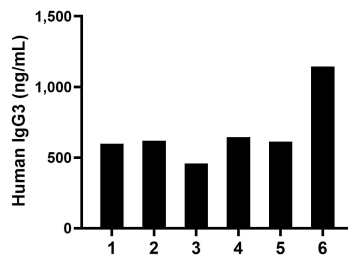
Plasma of six individual healthy human donors was measured. The IgG3 concentration of detected samples was determined to be 819.81 ug/mL with a range of 663.02-1,007.34 ug/mL.



Saliva of six individual healthy human donors was measured. The IgG3 concentration of detected samples was determined to be 143.38 ng/mL with a range of 28.55-370.13 ng/mL.



Urine of six individual healthy human donors was measured. The IgG3 concentration of detected samples was determined to be 168.77 ng/mL with a range of 66.33-367.03 ng/mL.



Human milk of six individual healthy human donors was measured. The IgG3 concentration of detected samples was determined to be 679.38 ng/mL with a range of 457.66-1,145.17 ng/mL.