

For Research Use Only

IgG4 Recombinant Matched Antibody Pair, PBS Only



Catalog Number:MP02951-2

Capture Antibody Information

Catalog Number:
87290-8-PBS
Host:
Rabbit
Isotype:
IgG
Purification Method:
Protein A purification

Clone ID:
251291E10
Reactivity:
human
Immunogen Catalog Number:
Eg6675

Conjugate:
Unconjugated
Full name:
immunoglobulin heavy constant gamma 4 (G4m marker)
Gene ID:
3503

Detection Antibody Information

Catalog Number:
87290-13-PBS
Host:
Rabbit
Isotype:
IgG
Purification Method:
Protein A purification

Clone ID:
251291C6
Reactivity:
human
GenBank:
Immunogen Catalog Number:
Eg6675

Conjugate:
Unconjugated
Full name:
immunoglobulin heavy constant gamma 4 (G4m marker)
Gene ID:
3503

Applications

Tested Applications:
Sandwich ELISA

Range:
0.195-12.5 ng/mL (Sandwich ELISA)

Recommended Dilutions:
It is recommended that this reagent should be titrated in each testing system to obtain optimal results.

Product Information

MP02951-2 targets IgG4 in immunoassays as a matched antibody pair. Validated in Sandwich ELISA.

Capture antibody: Human IgG4 Recombinant monoclonal antibody, PBS Only (Capture) 87290-8-PBS (251291E10). 100 µg. Concentration 1 mg/ml.

Detection antibody: Human IgG4 Recombinant monoclonal antibody, PBS Only (Detector) 87290-13-PBS (251291C6). 100 µg. Concentration 1 mg/ml.

Unconjugated rabbit recombinant monoclonal antibody pair in PBS only storage buffer at a concentration of 1 mg/mL, ready for conjugation. Created using Proteintech's proprietary in-house recombinant technology. Recombinant production enables unrivalled batch-to-batch consistency, easy scale-up, and future security of supply.

Matched antibody pairs are designed for use in a variety of assays and platforms that require matched antibody pairs.

Antibody use should be optimized for each application and assay.

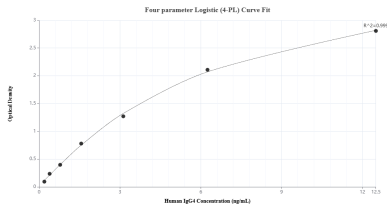
Storage

Storage:
Store at -80°C.
Storage buffer:
PBS only

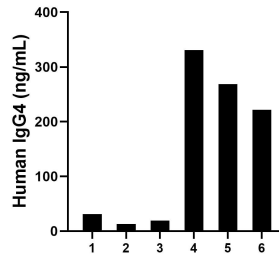
For technical support and original validation data for this product please contact:
T: 1 (888) 4PTGLAB (1-888-478-4522) (toll free in USA), or 1(312) 455-8498 (outside USA) E: proteintech@ptglab.com
W: ptglab.com

This product is exclusively available under Proteintech Group brand and is not available to purchase from any other manufacturer.

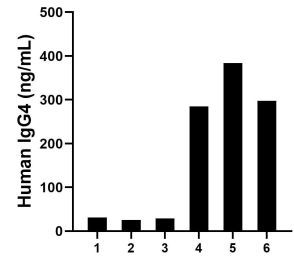
Selected Validation Data



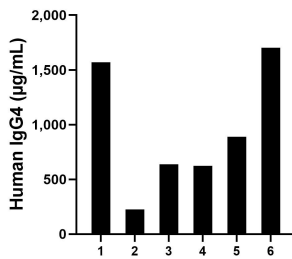
Sandwich ELISA standard curve of MP02951-2, Human IgG4 Recombinant Matched Antibody Pair - PBS only. 87290-8-PBS was coated to a plate as the capture antibody and incubated with serial dilutions of standard Eg6675. 87290-13-PBS was HRP conjugated as the detection antibody. Range: 0.195-12.5 ng/mL



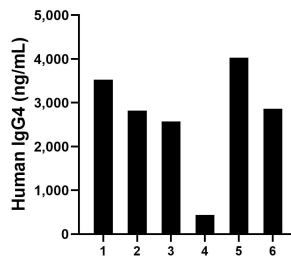
Urine of six individual healthy human donors was measured. The human IgG4 concentration of detected samples was determined to be 147.44 ng/mL with a range of 12.85 - 331.11 ng/mL.



Saliva of six individual healthy human donors was measured. The human IgG4 concentration of detected samples was determined to be 175.21 ng/mL with a range of 25.29 - 383.71 ng/mL.



Plasma of six individual healthy human donors was measured. The human IgG4 concentration of detected samples was determined to be 941.42 µg/mL with a range of 225.54 - 1,701.22 µg/mL.



Human milk of six individual healthy human donors was measured. The human IgG4 concentration of detected samples was determined to be 2,708.86 ng/mL with a range of 439.50 - 4,028.35 ng/mL.