

For Research Use Only

# Annexin A1 Recombinant Matched Antibody Pair, PBS Only



Catalog Number:MP02960-2

## Capture Antibody Information

Catalog Number:

87316-1-PBS

Host:

Rabbit

Isotype:

IgG

Purification Method:

Protein A purification

Clone ID:

251332C11

Reactivity:

human

Immunogen Catalog Number:

Eg4503

Conjugate:

Unconjugated

Full name:

annexin A1

Gene ID:

301

## Detection Antibody Information

Catalog Number:

87316-4-PBS

Host:

Rabbit

Isotype:

IgG

Purification Method:

Protein A purification

Clone ID:

251332B10

Reactivity:

human

GenBank:

NM\_000700.3

Immunogen Catalog Number:

Eg4503

Conjugate:

Unconjugated

Full name:

annexin A1

Gene ID:

301

## Applications

Tested Applications:

Sandwich ELISA

Range:

0.156-5 ng/mL (Sandwich ELISA)

Recommended Dilutions:

It is recommended that this reagent should be titrated in each testing system to obtain optimal results.

## Product Information

MP02960-2 targets Annexin A1 in immunoassays as a matched antibody pair. Validated in Sandwich ELISA.

Capture antibody: Annexin A1 Recombinant monoclonal antibody, PBS Only (Capture/Detector) 87316-1-PBS (251332C11). 100 µg. Concentration 1 mg/mL.

Detection antibody: Annexin A1 Recombinant monoclonal antibody, PBS Only (Detector) 87316-4-PBS (251332B10). 100 µg. Concentration 1 mg/mL.

Unconjugated rabbit recombinant monoclonal antibody pair in PBS only storage buffer at a concentration of 1 mg/mL, ready for conjugation. Created using Proteintech's proprietary in-house recombinant technology. Recombinant production enables unrivalled batch-to-batch consistency, easy scale-up, and future security of supply.

Matched antibody pairs are designed for use in a variety of assays and platforms that require matched antibody pairs.

Antibody use should be optimized for each application and assay.

## Storage

Storage:

Store at -80°C.

Storage buffer:

PBS only

For technical support and original validation data for this product please contact:

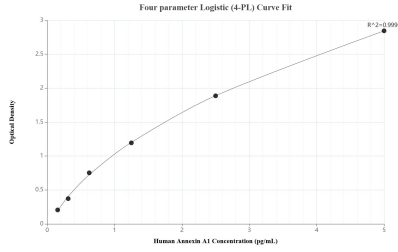
T: 1 (888) 4PTGLAB (1-888-478-4522) (toll free in USA), or 1(312) 455-8498 (outside USA)

E: [proteintech@ptglab.com](mailto:proteintech@ptglab.com)

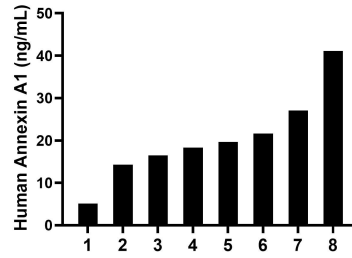
W: [ptglab.com](http://ptglab.com)

This product is exclusively available under Proteintech Group brand and is not available to purchase from any other manufacturer.

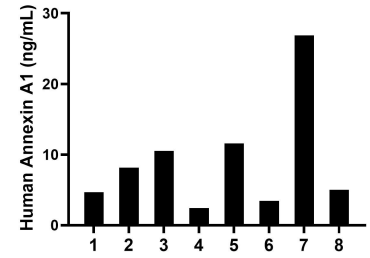
## Selected Validation Data



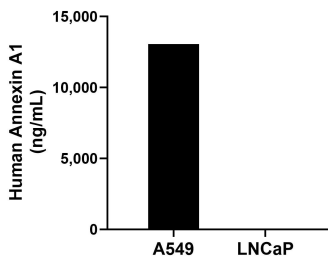
Sandwich ELISA standard curve of MP02960-2, Human Annexin A1 Recombinant Matched Antibody Pair - PBS only. 87316-1-PBS was coated to a plate as the capture antibody and incubated with serial dilutions of standard Eg4503. 87316-4-PBS was HRP conjugated as the detection antibody. Range: 0.156-5 ng/mL



Plasma of eight individual healthy human donors was measured. The Annexin A1 concentration of detected samples was determined to be 20.45 ng/mL with a range of 5.09-41.09 ng/mL



Serum of eight individual healthy human donors was measured. The Annexin A1 concentration of detected samples was determined to be 9.09 ng/mL with a range of 2.43-26.85 ng/mL



The mean Annexin A1 concentration was determined to be 13,051.00 ng/mL in A549 cell extract based on a 1.10 mg/mL extract load and 1.25 ng/mL in LNCaP cell extract based on a 1.20 mg/mL extract load.