

For Research Use Only

COL8A1 Recombinant Matched Antibody Pair, PBS Only



Catalog Number:MP02961-1

Capture Antibody Information

Catalog Number:
87280-3-PBS

Host:
Rabbit

Isotype:
IgG

Purification Method:
Protein A purification

Clone ID:
252552A7

Reactivity:
human

Immunogen Catalog Number:
Ag10607

Conjugate:
Unconjugated

Full name:
collagen, type VIII, alpha 1

Gene ID:
1295

Detection Antibody Information

Catalog Number:
87280-2-PBS

Host:
Rabbit

Isotype:
IgG

Purification Method:
Protein A purification

Clone ID:
252552B3

Reactivity:
human

GenBank:
BC013581

Immunogen Catalog Number:
Ag10607

Conjugate:
Unconjugated

Full name:
collagen, type VIII, alpha 1

Gene ID:
1295

Applications

Tested Applications:
Sandwich ELISA

Range:
15.6-1000 pg/mL (Sandwich ELISA)

Recommended Dilutions:
It is recommended that this reagent should be titrated in each testing system to obtain optimal results.

Product Information

MP02961-1 targets COL8A1 in immunoassays as a matched antibody pair. Validated in Sandwich ELISA.

Capture antibody: COL8A1 Recombinant monoclonal antibody, PBS Only (Capture) 87280-3-PBS (252552A7). 100 µg. Concentration 1 mg/mL.

Detection antibody: COL8A1 Recombinant monoclonal antibody, PBS Only (Detector) 87280-2-PBS (252552B3). 100 µg. Concentration 1 mg/mL.

Unconjugated rabbit recombinant monoclonal antibody pair in PBS only storage buffer at a concentration of 1 mg/mL, ready for conjugation. Created using Proteintech's proprietary in-house recombinant technology. Recombinant production enables unrivalled batch-to-batch consistency, easy scale-up, and future security of supply.

Matched antibody pairs are designed for use in a variety of assays and platforms that require matched antibody pairs.

Antibody use should be optimized for each application and assay.

Storage

Storage:
Store at -80°C.
Storage buffer:
PBS only

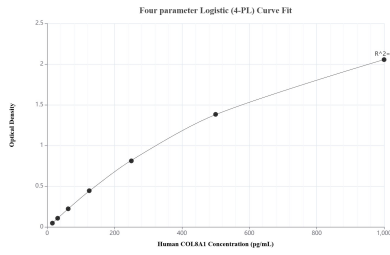
For technical support and original validation data for this product please contact:

T: 1 (888) 4PTGLAB (1-888-478-4522) (toll free in USA), or 1(312) 455-8498 (outside USA)

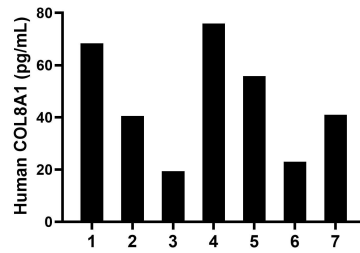
E: proteintech@ptglab.com
W: ptglab.com

This product is exclusively available under Proteintech Group brand and is not available to purchase from any other manufacturer.

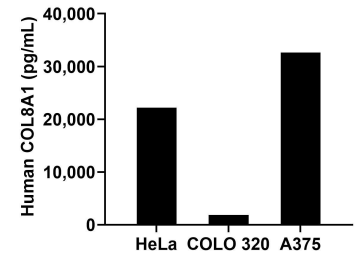
Selected Validation Data



Sandwich ELISA standard curve of MP02961-1, Human COL8A1 Recombinant Matched Antibody Pair - PBS only. 87280-3-PBS was coated to a plate as the capture antibody and incubated with serial dilutions of standard Ag10607. 87280-2-PBS was HRP conjugated as the detection antibody. Range: 15.6-1000 pg/mL



Plasma of seven individual healthy human donors was measured. The COL8A1 concentration of detected samples was determined to be 46.3 pg/mL with a range of 19.4-75.9 pg/mL



The mean COL8A1 concentration was determined to be 22,162.3 pg/mL in HeLa cell extract based on a 1.2 mg/mL extract load, 1,857.3 pg/mL in COLO 320 cell extract based on a 1.2 mg/mL extract load and 32,654.0 pg/mL in A375 cell extract based on a 1.6 mg/mL extract load.