

For Research Use Only

PTPRJ/CD148 Recombinant Matched Antibody Pair, PBS Only



Catalog Number:MP02965-1

Capture Antibody Information

Catalog Number:
87321-3-PBS
Host:
Rabbit
Isotype:
IgG
Purification Method:
Protein A purification

Clone ID:
252382E12
Reactivity:
human
Immunogen Catalog Number:
Eg3492

Conjugate:
Unconjugated
Full name:
protein tyrosine phosphatase, receptor type, J
Gene ID:
5795

Detection Antibody Information

Catalog Number:
87321-2-PBS
Host:
Rabbit
Isotype:
IgG
Purification Method:
Protein A purification

Clone ID:
252382D11
Reactivity:
human
GenBank:
NM_002843.4
Immunogen Catalog Number:
Eg3492

Conjugate:
Unconjugated
Full name:
protein tyrosine phosphatase, receptor type, J
Gene ID:
5795

Applications

Tested Applications:
Cytometric bead array

Range:
0.781-100 ng/mL (Cytometric Bead Array)

Recommended Dilutions:
It is recommended that this reagent should be titrated in each testing system to obtain optimal results.

Product Information

MP02965-1 targets PTPRJ/CD148 in immunoassays as a matched antibody pair. Validated in Cytometric bead array.

Capture antibody: PTPRJ/CD148 Recombinant monoclonal antibody, PBS Only (Capture) 87321-3-PBS (252382E12). 100 µg. Concentration 1 mg/mL.

Detection antibody: PTPRJ/CD148 Recombinant monoclonal antibody, PBS Only (Detector) 87321-2-PBS (252382D11). 100 µg. Concentration 1 mg/mL.

Unconjugated rabbit recombinant monoclonal antibody pair in PBS only storage buffer at a concentration of 1 mg/mL, ready for conjugation. Created using Proteintech's proprietary in-house recombinant technology. Recombinant production enables unrivalled batch-to-batch consistency, easy scale-up, and future security of supply.

Matched antibody pairs are designed for use in a variety of assays and platforms that require matched antibody pairs.

Antibody use should be optimized for each application and assay.

Storage

Storage:
Store at -80°C.
Storage buffer:
PBS only

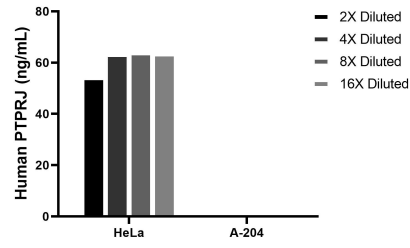
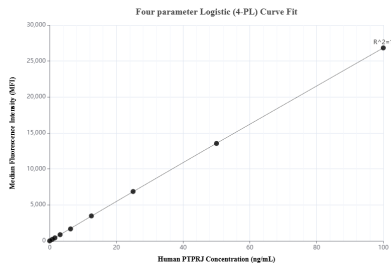
For technical support and original validation data for this product please contact:

T: 1 (888) 4PTGLAB (1-888-478-4522) (toll free in USA), or 1(312) 455-8498 (outside USA)

E: proteintech@ptglab.com
W: ptglab.com

This product is exclusively available under Proteintech Group brand and is not available to purchase from any other manufacturer.

Selected Validation Data



Cytometric bead array standard curve of MP02965-1, PTPRJ/CD148 Recombinant Matched Antibody Pair, PBS Only. Capture antibody: 87321-3-PBS. Detection antibody: 87321-2-PBS. Standard: Eg3492. Range: 0.781-100 ng/mL

The mean PTPRJ/CD148 concentration was determined to be 61.1 ng/mL in HeLa cell extract based on a 2.2 mg/mL extract load, A-204 cell extract were served as a negative control.