

For Research Use Only

RPS6KB2 Recombinant Matched Antibody Pair, PBS Only



Catalog Number:MP02968-1

Capture Antibody Information

Catalog Number:
86983-3-PBS
Host:
Rabbit
Isotype:
IgG
Purification Method:
Protein A purification

Clone ID:
252089E1
Reactivity:
human
Immunogen Catalog Number:
Ag7371

Conjugate:
Unconjugated
Full name:
ribosomal protein S6 kinase, 70kDa, polypeptide 2
Gene ID:
6199

Detection Antibody Information

Catalog Number:
86983-2-PBS
Host:
Rabbit
Isotype:
IgG
Purification Method:
Protein A purification

Clone ID:
252089D4
Reactivity:
human
GenBank:
BC000094
Immunogen Catalog Number:
Ag7371

Conjugate:
Unconjugated
Full name:
ribosomal protein S6 kinase, 70kDa, polypeptide 2
Gene ID:
6199

Applications

Tested Applications:
Sandwich ELISA

Range:
0.78-50 ng/mL (Sandwich ELISA)

Recommended Dilutions:
It is recommended that this reagent should be titrated in each testing system to obtain optimal results.

Product Information

MP02968-1 targets RPS6KB2 in immunoassays as a matched antibody pair. Validated in Sandwich ELISA.

Capture antibody: RPS6KB2 Recombinant monoclonal antibody, PBS Only (Capture) 86983-3-PBS (252089E1). 100 µg. Concentration 1 mg/mL.

Detection antibody: RPS6KB2 Recombinant monoclonal antibody, PBS Only (Detector) 86983-2-PBS (252089D4). 100 µg. Concentration 1 mg/mL.

Unconjugated rabbit recombinant monoclonal antibody pair in PBS only storage buffer at a concentration of 1 mg/mL, ready for conjugation. Created using Proteintech's proprietary in-house recombinant technology. Recombinant production enables unrivalled batch-to-batch consistency, easy scale-up, and future security of supply.

Matched antibody pairs are designed for use in a variety of assays and platforms that require matched antibody pairs.

Antibody use should be optimized for each application and assay.

Storage

Storage:
Store at -80°C.
Storage buffer:
PBS only

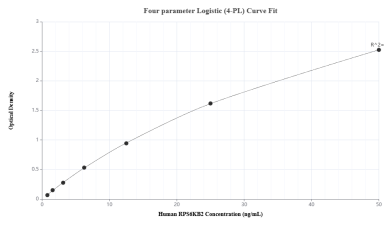
For technical support and original validation data for this product please contact:

T: 1 (888) 4PTGLAB (1-888-478-4522) (toll free in USA), or 1(312) 455-8498 (outside USA)

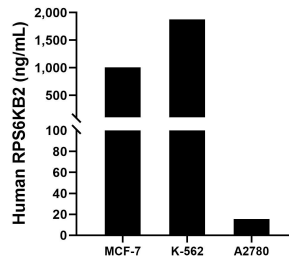
E: proteintech@ptglab.com
W: ptglab.com

This product is exclusively available under Proteintech Group brand and is not available to purchase from any other manufacturer.

Selected Validation Data



Sandwich ELISA standard curve of MP02968-1, Human RPS6KB2 Recombinant Matched Antibody Pair - PBS only. 86983-3-PBS was coated to a plate as the capture antibody and incubated with serial dilutions of standard Ag7371. 86983-2-PBS was HRP conjugated as the detection antibody. Range: 0.78-50 ng/mL



The mean RPS6KB2 concentration was determined to be 1,008.41 ng/mL in MCF-7 cell extract based on a 1.2 mg/mL extract load, 1,876.10 ng/mL in K-562 cell extract based on a 1.2 mg/mL extract load and 15.50 ng/mL in A2780 cell extract based on a 1.2 mg/mL extract load.