

For Research Use Only

# Syntenin-1 Recombinant Matched Antibody Pair, PBS Only



Catalog Number:MP02969-1

## Capture Antibody Information

Catalog Number:

86968-2-PBS

Host:

Rabbit

Isotype:

IgG

Purification Method:

Protein A purification

Clone ID:

252107G12

Reactivity:

human

Immunogen Catalog Number:

Ag18078

Conjugate:

Unconjugated

Full name:

syndecan binding protein (syntenin)

Gene ID:

6386

## Detection Antibody Information

Catalog Number:

86968-1-PBS

Host:

Rabbit

Isotype:

IgG

Purification Method:

Protein A purification

Clone ID:

252107H1

Reactivity:

human

GenBank:

BC113674

Immunogen Catalog Number:

Ag18078

Conjugate:

Unconjugated

Full name:

syndecan binding protein (syntenin)

Gene ID:

6386

## Applications

Tested Applications:

Sandwich ELISA

Range:

1.56-100 ng/mL (Sandwich ELISA)

Recommended Dilutions:

It is recommended that this reagent should be titrated in each testing system to obtain optimal results.

## Product Information

MP02969-1 targets Syntenin-1 in immunoassays as a matched antibody pair. Validated in Sandwich ELISA.

Capture antibody: SDCBP Recombinant monoclonal antibody, PBS Only (Capture) 86968-2-PBS (252107G12). 100 µg. Concentration 1 mg/mL.

Detection antibody: Syntenin-1 Recombinant monoclonal antibody, PBS Only (Detector) 86968-1-PBS (252107H1). 100 µg. Concentration 1 mg/mL.

Unconjugated rabbit recombinant monoclonal antibody pair in PBS only storage buffer at a concentration of 1 mg/mL, ready for conjugation. Created using Proteintech's proprietary in-house recombinant technology. Recombinant production enables unrivalled batch-to-batch consistency, easy scale-up, and future security of supply.

Matched antibody pairs are designed for use in a variety of assays and platforms that require matched antibody pairs.

Antibody use should be optimized for each application and assay.

## Storage

Storage:

Store at -80°C.

Storage buffer:

PBS only

For technical support and original validation data for this product please contact:

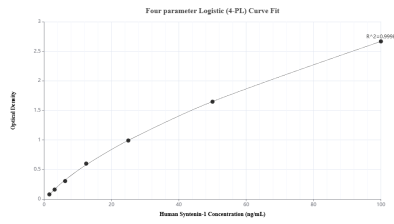
T: 1 (888) 4PTGLAB (1-888-478-4522) (toll free in USA), or 1(312) 455-8498 (outside USA)

E: [proteintech@ptglab.com](mailto:proteintech@ptglab.com)

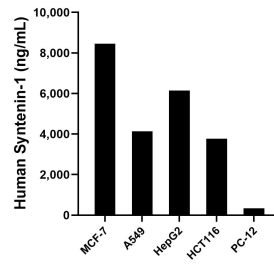
W: [ptglab.com](http://ptglab.com)

This product is exclusively available under Proteintech Group brand and is not available to purchase from any other manufacturer.

## Selected Validation Data



Sandwich ELISA standard curve of MP02969-1, Human Syntenin-1 Recombinant Matched Antibody Pair - PBS only. 86968-2-PBS was coated to a plate as the capture antibody and incubated with serial dilutions of standard Ag18078. 86968-1-PBS was HRP conjugated as the detection antibody. Range: 1.56-100 ng/mL



The mean Syntenin-1 concentration was determined to be 8,459.69 ng/mL in MCF-7 cell extract based on a 1.2 mg/mL extract load, 4,141.00 ng/mL in A549 cell extract based on a 1.2 mg/mL extract load, 6,144.14 ng/mL in HepG2 cell extract based on a 1.2 mg/mL extract load, 3,765.64 ng/mL in HCT 116 cell extract based on a 1.3 mg/mL extract load and 339.31 ng/mL in PC-12 cell extract based on a 1.4 mg/mL extract load.