

For Research Use Only

Mouse TNFSF15 Recombinant Matched Antibody Pair, PBS Only



Catalog Number:MP02970-1

Capture Antibody Information

Catalog Number:
87367-2-PBS

Host:
Rabbit

Isotype:
IgG

Purification Method:
Protein A purification

Clone ID:
250983F7

Reactivity:
mouse

Immunogen Catalog Number:
Eg5273

Conjugate:
Unconjugated

Full name:
tumor necrosis factor (ligand) superfamily, member 15

Gene ID:
326623

Detection Antibody Information

Catalog Number:
87367-1-PBS

Host:
Rabbit

Isotype:
IgG

Purification Method:
Protein A purification

Clone ID:
250983C12

Reactivity:
mouse

GenBank:
/

Immunogen Catalog Number:
Eg5273

Conjugate:
Unconjugated

Full name:
tumor necrosis factor (ligand) superfamily, member 15

Gene ID:
326623

Applications

Tested Applications:
Sandwich ELISA

Range:
39.1-2500 pg/mL (Sandwich ELISA)

Recommended Dilutions:
It is recommended that this reagent should be titrated in each testing system to obtain optimal results.

Product Information

MP02970-1 targets TNFSF15 in immunoassays as a matched antibody pair. Validated in Sandwich ELISA.

Capture antibody: Mouse TL1A/TNFSF15 Recombinant monoclonal antibody, PBS Only (Capture) 87367-2-PBS (250983F7). 100 µg. Concentration 1 mg/mL.

Detection antibody: Mouse TL1A/TNFSF15 Recombinant monoclonal antibody, PBS Only (Detector) 87367-1-PBS (250983C12). 100 µg. Concentration 1 mg/mL.

Unconjugated rabbit recombinant monoclonal antibody pair in PBS only storage buffer at a concentration of 1 mg/mL, ready for conjugation. Created using Proteintech's proprietary in-house recombinant technology. Recombinant production enables unrivalled batch-to-batch consistency, easy scale-up, and future security of supply.

Matched antibody pairs are designed for use in a variety of assays and platforms that require matched antibody pairs.

Antibody use should be optimized for each application and assay.

Storage

Storage:
Store at -80°C.
Storage buffer:
PBS only

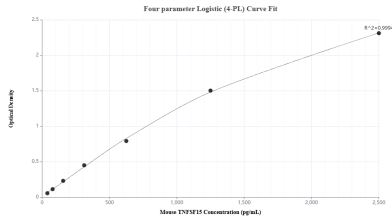
For technical support and original validation data for this product please contact:

T: 1 (888) 4PTGLAB (1-888-478-4522) (toll free in USA), or 1(312) 455-8498 (outside USA)

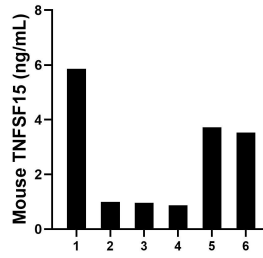
E: proteintech@ptglab.com
W: ptglab.com

This product is exclusively available under Proteintech Group brand and is not available to purchase from any other manufacturer.

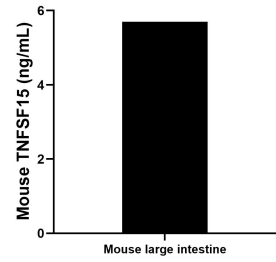
Selected Validation Data



Sandwich ELISA standard curve of MP02970-1, Mouse TNFSF15 Recombinant Matched Antibody Pair - PBS only. 87367-2-PBS was coated to a plate as the capture antibody and incubated with serial dilutions of standard Eg5273. 87367-1-PBS was HRP conjugated as the detection antibody. Range: 39.1-2500 pg/mL



Serum of six mice was measured. The mouse TNFSF15 concentration of detected samples was determined to be 2.66 ng/mL with a range of 0.87 - 5.86 ng/mL.



The mean TNFSF15 concentration was determined to be 5.70 ng/mL in mouse large intestine extract based on a 4.5 mg/mL extract load.