

For Research Use Only

# Laminin beta 1 Recombinant Matched Antibody Pair, PBS Only



Catalog Number:MP02972-1

## Capture Antibody Information

Catalog Number:  
86881-1-PBS

Host:  
Rabbit

Isotype:  
IgG

Purification Method:  
Protein A purification

Clone ID:  
251869B1

Reactivity:  
human, mouse

Immunogen Catalog Number:  
Ag19182

Conjugate:  
Unconjugated

Full name:  
laminin, beta 1

Gene ID:  
3912

## Detection Antibody Information

Catalog Number:  
86881-2-PBS

Host:  
Rabbit

Isotype:  
IgG

Purification Method:  
Protein A purification

Clone ID:  
251869F10

Reactivity:  
human

GenBank:  
BC113455

Immunogen Catalog Number:  
Ag19182

Conjugate:  
Unconjugated

Full name:  
laminin, beta 1

Gene ID:  
3912

## Applications

Tested Applications:  
Sandwich ELISA

Range:  
78.1-5000 pg/mL (Sandwich ELISA)

Recommended Dilutions:  
It is recommended that this reagent should be titrated in each testing system to obtain optimal results.

## Product Information

MP02972-1 targets Laminin beta 1 in immunoassays as a matched antibody pair. Validated in Sandwich ELISA.

Capture antibody: Laminin beta 1 Recombinant monoclonal antibody, PBS Only (Capture) 86881-1-PBS (251869B1). 100 µg. Concentration 1 mg/mL.

Detection antibody: LAMB1 Recombinant monoclonal antibody, PBS Only (Detector) 86881-2-PBS (251869F10). 100 µg. Concentration 1 mg/mL.

Unconjugated rabbit recombinant monoclonal antibody pair in PBS only storage buffer at a concentration of 1 mg/mL, ready for conjugation. Created using Proteintech's proprietary in-house recombinant technology. Recombinant production enables unrivalled batch-to-batch consistency, easy scale-up, and future security of supply.

Matched antibody pairs are designed for use in a variety of assays and platforms that require matched antibody pairs.

Antibody use should be optimized for each application and assay.

## Storage

Storage:  
Store at -80°C.  
Storage buffer:  
PBS only

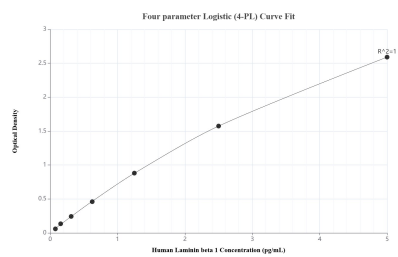
For technical support and original validation data for this product please contact:

T: 1 (888) 4PTGLAB (1-888-478-4522) (toll free in USA), or 1(312) 455-8498 (outside USA)

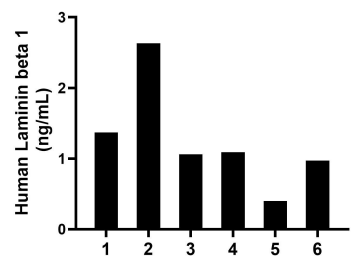
E: [proteintech@ptglab.com](mailto:proteintech@ptglab.com)  
W: [ptglab.com](http://ptglab.com)

This product is exclusively available under Proteintech Group brand and is not available to purchase from any other manufacturer.

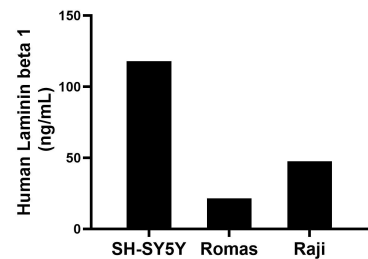
## Selected Validation Data



Sandwich ELISA standard curve of MP02972-1, Human Laminin beta 1 Recombinant Matched Antibody Pair - PBS only. 86881-1-PBS was coated to a plate as the capture antibody and incubated with serial dilutions of standard Ag19182. 86881-2-PBS was HRP conjugated as the detection antibody. Range: 78.1-5000 pg/mL.



Serum of six individual healthy human donors was measured. The Laminin beta 1 concentration of detected samples was determined to be 1.3 ng/mL with a range of 0.4-2.6 ng/mL.



The mean Laminin beta 1 concentration was determined to be 118.0 ng/mL in SH-SY5Y cell extract based on a 1.2 mg/mL extract load, 21.5 ng/mL in Ramos cell extract based on a 2.3 mg/mL extract load and 47.6 ng/mL in Raji cell extract based on a 1.5 mg/mL extract load.