

For Research Use Only

# Mouse HGFR/c-Met Recombinant Matched Antibody Pair, PBS Only



Catalog Number:MP02974-1

## Capture Antibody Information

<b>Catalog Number:</b> 87352-2-PBS	<b>Clone ID:</b> 252395A7	<b>Conjugate:</b> Unconjugated
<b>Host:</b> Rabbit	<b>Reactivity:</b> mouse	<b>Full name:</b> met proto-oncogene
<b>Isotype:</b> IgG	<b>Immunogen Catalog Number:</b> Eg6351	<b>Gene ID:</b> 17295
<b>Purification Method:</b> Protein A purification		

## Detection Antibody Information

<b>Catalog Number:</b> 87352-1-PBS	<b>Clone ID:</b> 252395C10	<b>Conjugate:</b> Unconjugated
<b>Host:</b> Rabbit	<b>Reactivity:</b> mouse	<b>Full name:</b> met proto-oncogene
<b>Isotype:</b> IgG	<b>GenBank:</b> /	<b>Gene ID:</b> 17295
<b>Purification Method:</b> Protein A purification	<b>Immunogen Catalog Number:</b> Eg6351	

## Applications

<b>Tested Applications:</b> Cytometric bead array, Sandwich ELISA	<b>Range:</b> 0.312-40 ng/mL (Cytometric Bead Array) 0.195-12.5 ng/mL (Sandwich ELISA)	<b>Recommended Dilutions:</b> It is recommended that this reagent should be titrated in each testing system to obtain optimal results.
--	--	---

## Product Information

MP02974-1 targets HGFR/c-Met in immunoassays as a matched antibody pair. Validated in Cytometric bead array, Sandwich ELISA.

Capture antibody: Mouse HGFR/c-Met Recombinant monoclonal antibody, PBS Only (Capture) 87352-2-PBS (252395A7). 100 µg. Concentration 1 mg/ml.

Detection antibody: Mouse HGFR/c-Met Recombinant monoclonal antibody, PBS Only (Detector) 87352-1-PBS (252395C10). 100 µg. Concentration 1 mg/ml.

Unconjugated rabbit recombinant monoclonal antibody pair in PBS only storage buffer at a concentration of 1 mg/mL, ready for conjugation. Created using Proteintech's proprietary in-house recombinant technology. Recombinant production enables unrivalled batch-to-batch consistency, easy scale-up, and future security of supply.

Matched antibody pairs are designed for use in a variety of assays and platforms that require matched antibody pairs.

Antibody use should be optimized for each application and assay.

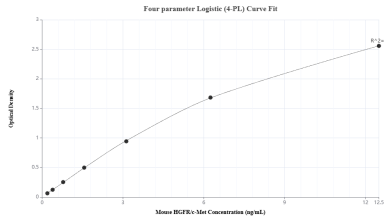
## Storage

**Storage:**  
Store at -80°C.  
**Storage buffer:**  
PBS only

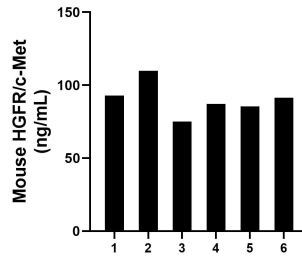
For technical support and original validation data for this product please contact:  
T: 1 (888) 4PTGLAB (1-888-478-4522) (toll free in USA), or 1(312) 455-8498 (outside USA)      E: proteintech@ptglab.com  
W: ptglab.com

This product is exclusively available under Proteintech Group brand and is not available to purchase from any other manufacturer.

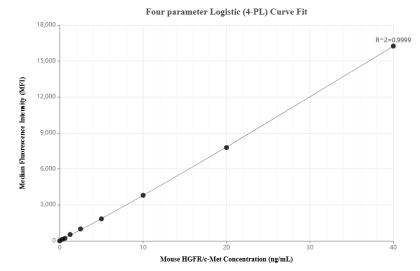
## Selected Validation Data



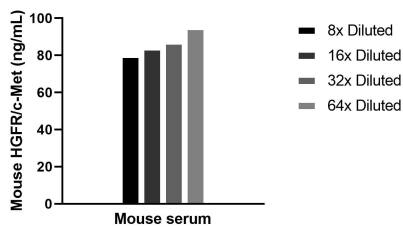
Sandwich ELISA standard curve of MP02974-1, Mouse HGFR/c-Met Recombinant Matched Antibody Pair - PBS only. 87352-2-PBS was coated to a plate as the capture antibody and incubated with serial dilutions of standard Eg6351. 87352-1-PBS was HRP conjugated as the detection antibody. Range: 0.195-12.5 ng/mL



Serum of six mice was measured. The mouse HGFR/c-Met concentration of detected samples was determined to be 90.31 ng/mL with a range of 75.06 - 109.96 ng/mL



Cytometric bead array standard curve of MP02974-1, MOUSE HGFR/c-Met Recombinant Matched Antibody Pair, PBS Only. Capture antibody: 87352-2-PBS. Detection antibody: 87352-1-PBS. Standard: Eg6351. Range: 0.312-40 ng/mL



The mean HGFR/c-Met concentration was determined to be 86.1 ng/mL in Mouse serum.