

For Research Use Only

INPP5F Recombinant Matched Antibody Pair, PBS Only



Catalog Number:MP02978-2

Capture Antibody Information

Catalog Number:
87311-4-PBS
Host:
Rabbit
Isotype:
IgG
Purification Method:
Protein A purification

Clone ID:
252661A4
Reactivity:
human
Immunogen Catalog Number:
Ag39933

Conjugate:
Unconjugated
Full name:
inositol polyphosphate-5-phosphatase F
Gene ID:
22876

Detection Antibody Information

Catalog Number:
87311-1-PBS
Host:
Rabbit
Isotype:
IgG
Purification Method:
Protein A purification

Clone ID:
252661F2
Reactivity:
human, mouse, rat
GenBank:
BC111493
Immunogen Catalog Number:
Ag39933

Conjugate:
Unconjugated
Full name:
inositol polyphosphate-5-phosphatase F
Gene ID:
22876

Applications

Tested Applications:
Sandwich ELISA

Range:
0.156-10 ng/mL (Sandwich ELISA)

Recommended Dilutions:
It is recommended that this reagent should be titrated in each testing system to obtain optimal results.

Product Information

MP02978-2 targets INPP5F in immunoassays as a matched antibody pair. Validated in Sandwich ELISA.

Capture antibody: INPP5F Recombinant monoclonal antibody, PBS Only (Capture) 87311-4-PBS (252661A4). 100 µg. Concentration 1 mg/mL.

Detection antibody: INPP5F Recombinant monoclonal antibody, PBS Only (Detector) 87311-1-PBS (252661F2). 100 µg. Concentration 1 mg/mL.

Unconjugated rabbit recombinant monoclonal antibody pair in PBS only storage buffer at a concentration of 1 mg/mL, ready for conjugation. Created using Proteintech's proprietary in-house recombinant technology. Recombinant production enables unrivalled batch-to-batch consistency, easy scale-up, and future security of supply.

Matched antibody pairs are designed for use in a variety of assays and platforms that require matched antibody pairs.

Antibody use should be optimized for each application and assay.

Storage

Storage:
Store at -80°C.
Storage buffer:
PBS only

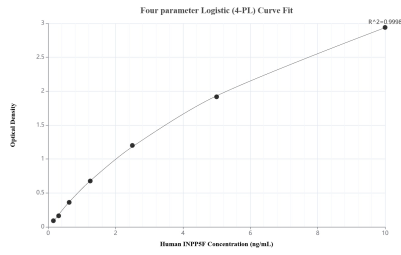
For technical support and original validation data for this product please contact:

T: 1 (888) 4PTGLAB (1-888-478-4522) (toll free in USA), or 1(312) 455-8498 (outside USA)

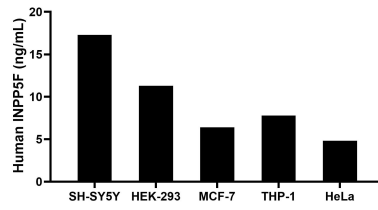
E: proteintech@ptglab.com
W: ptglab.com

This product is exclusively available under Proteintech Group brand and is not available to purchase from any other manufacturer.

Selected Validation Data



Sandwich ELISA standard curve of MP02978-2, Human INPP5F Recombinant Matched Antibody Pair - PBS only. 87311-4-PBS was coated to a plate as the capture antibody and incubated with serial dilutions of standard Ag39933. 87311-1-PBS was HRP conjugated as the detection antibody. Range: 0.156-10 ng/mL



The mean INPP5F concentration was determined to be 17.30 ng/mL in SH-SY5Y cell extract based on a 1.20 mg/mL extract load, 11.30 ng/mL in HEK-293 cell extract based on a 1.20 mg/mL extract load, 6.40 ng/mL in MCF-7 cell extract based on a 1.20 mg/mL extract load, 7.80 ng/mL in THP-1 cell extract based on a 1.20 mg/mL extract load, and 4.80 ng/mL in HeLa cell extract based on a 1.20 mg/mL extract load.