

For Research Use Only

# KLK14 Recombinant Matched Antibody Pair, PBS Only



Catalog Number:MP02991-1

## Capture Antibody Information

Catalog Number:  
85809-2-PBS

Host:  
Rabbit

Isotype:  
IgG

Purification Method:  
Protein A purification

Clone ID:  
243023D9

Reactivity:  
human

Immunogen Catalog Number:  
Eg2472

Conjugate:  
Unconjugated

Full name:  
kallikrein-related peptidase 14

Gene ID:  
43847

## Detection Antibody Information

Catalog Number:  
85809-1-PBS

Host:  
Rabbit

Isotype:  
IgG

Purification Method:  
Protein A purification

Clone ID:  
243023F6

Reactivity:  
human

GenBank:  
NM\_022046.5

Immunogen Catalog Number:  
Eg2472

Conjugate:  
Unconjugated

Full name:  
kallikrein-related peptidase 14

Gene ID:  
43847

## Applications

Tested Applications:  
Sandwich ELISA

Range:  
0.156-10 ng/mL (Sandwich ELISA)

Recommended Dilutions:  
It is recommended that this reagent should be titrated in each testing system to obtain optimal results.

## Product Information

MP02991-1 targets KLK14 in immunoassays as a matched antibody pair. Validated in Sandwich ELISA.

Capture antibody: KLK14 Recombinant monoclonal antibody, PBS Only (Capture) 85809-2-PBS (243023D9). 100 µg. Concentration 1 mg/mL.

Detection antibody: KLK14 Recombinant monoclonal antibody, PBS Only (Detector) 85809-1-PBS (243023F6). 100 µg. Concentration 1 mg/mL.

Unconjugated rabbit recombinant monoclonal antibody pair in PBS only storage buffer at a concentration of 1 mg/mL, ready for conjugation. Created using Proteintech's proprietary in-house recombinant technology. Recombinant production enables unrivalled batch-to-batch consistency, easy scale-up, and future security of supply.

Matched antibody pairs are designed for use in a variety of assays and platforms that require matched antibody pairs.

Antibody use should be optimized for each application and assay.

## Storage

Storage:  
Store at -80°C.  
Storage buffer:  
PBS only

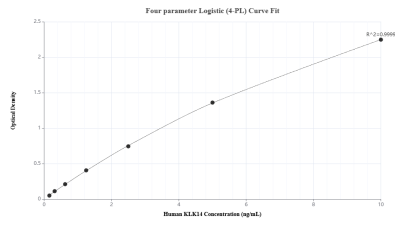
For technical support and original validation data for this product please contact:

T: 1 (888) 4PTGLAB (1-888-478-4522) (toll free in USA), or 1(312) 455-8498 (outside USA)

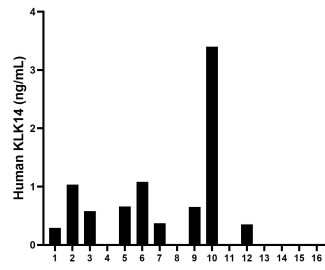
E: [proteintech@ptglab.com](mailto:proteintech@ptglab.com)  
W: [ptglab.com](http://ptglab.com)

This product is exclusively available under Proteintech Group brand and is not available to purchase from any other manufacturer.

## Selected Validation Data



Sandwich ELISA standard curve of MP02991-1, Human KLK14 Recombinant Matched Antibody Pair - PBS only. 85809-2-PBS was coated to a plate as the capture antibody and incubated with serial dilutions of standard Eg2472. 85809-1-PBS was HRP conjugated as the detection antibody. Range: 0.156-10 ng/mL



Plasma of sixteen individual healthy human donors was measured. The human KLK14 concentration of detected samples was determined to be 0.94 ng/mL with a range of ND - 3.40 ng/mL