

For Research Use Only



Alpha Synuclein Recombinant Matched Antibody Pair, PBS Only

Catalog Number:MP02993-1

Capture Antibody Information

Catalog Number:
87489-2-PBS

Host:
Rabbit

Isotype:
IgG

Purification Method:
Protein A purification

Clone ID:
251410G10

Reactivity:
human

Immunogen Catalog Number:
Eg5390

Conjugate:
Unconjugated

Full name:
synuclein, alpha (non A4 component of amyloid precursor)

Gene ID:
6622

Detection Antibody Information

Catalog Number:
87489-1-PBS

Host:
Rabbit

Isotype:
IgG

Purification Method:
Protein A purification

Clone ID:
251410F3

Reactivity:
human

GenBank:
BC108275

Immunogen Catalog Number:
Eg5390

Conjugate:
Unconjugated

Full name:
synuclein, alpha (non A4 component of amyloid precursor)

Gene ID:
6622

Applications

Tested Applications:
Sandwich ELISA

Range:
0.313-20 ng/mL (Sandwich ELISA)

Recommended Dilutions:
It is recommended that this reagent should be titrated in each testing system to obtain optimal results.

Product Information

MP02993-1 targets Alpha Synuclein in immunoassays as a matched antibody pair. Validated in Sandwich ELISA.

Capture antibody: SNCA Recombinant monoclonal antibody, PBS Only (Capture) 87489-2-PBS (251410G10). 100 µg. Concentration 1 mg/mL.

Detection antibody: SNCA Recombinant monoclonal antibody, PBS Only (Detector) 87489-1-PBS (251410F3). 100 µg. Concentration 1 mg/mL.

Unconjugated rabbit recombinant monoclonal antibody pair in PBS only storage buffer at a concentration of 1 mg/mL, ready for conjugation. Created using Proteintech's proprietary in-house recombinant technology. Recombinant production enables unrivalled batch-to-batch consistency, easy scale-up, and future security of supply.

Matched antibody pairs are designed for use in a variety of assays and platforms that require matched antibody pairs.

Antibody use should be optimized for each application and assay.

Storage

Storage:
Store at -80°C.
Storage buffer:
PBS only

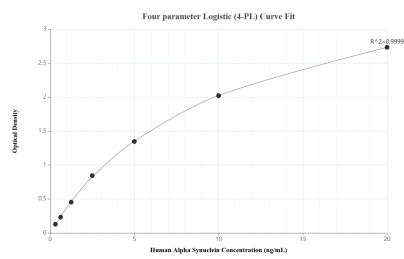
For technical support and original validation data for this product please contact:

T: 1 (888) 4PTGLAB (1-888-478-4522) (toll free in USA), or 1(312) 455-8498 (outside USA)

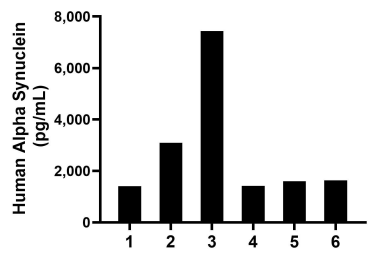
E: proteintech@ptglab.com
W: ptglab.com

This product is exclusively available under Proteintech Group brand and is not available to purchase from any other manufacturer.

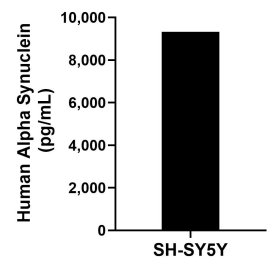
Selected Validation Data



Sandwich ELISA standard curve of MP02993-1, Human Alpha Synuclein Recombinant Matched Antibody Pair - PBS only. 87489-2-PBS was coated to a plate as the capture antibody and incubated with serial dilutions of standard Eg5390. 87489-1-PBS was HRP conjugated as the detection antibody. Range: 0.313-20 ng/mL



Plasma of six individual healthy human donors was measured. The Alpha Synuclein concentration of detected samples was determined to be 2,765.24 pg/mL with a range of 1,404.76-7,435.16 pg/mL



The mean Alpha Synuclein concentration was determined to be 9,321.89 ng/mL in SH-SY5Y cell extract based on a 1.20 mg/mL extract load.