

# AKT2 Recombinant Matched Antibody Pair, PBS Only

Catalog Number:MP02994-1

## Capture Antibody Information

**Catalog Number:**

87121-1-PBS

**Host:**

Rabbit

**Isotype:**

IgG

**Purification Method:**

Protein A purification

**Clone ID:**

252138G5

**Reactivity:**

human

**Immunogen Catalog Number:**

Ag11770

**Conjugate:**

Unconjugated

**Full name:**

v-akt murine thymoma viral oncogene homolog 2

**Gene ID:**

208

## Detection Antibody Information

**Catalog Number:**

87121-3-PBS

**Host:**

Rabbit

**Isotype:**

IgG

**Purification Method:**

Protein A purification

**Clone ID:**

252138A5

**Reactivity:**

human

**GenBank:**

BC063421

**Immunogen Catalog Number:**

Ag11770

**Conjugate:**

Unconjugated

**Full name:**

v-akt murine thymoma viral oncogene homolog 2

**Gene ID:**

208

## Applications

**Tested Applications:**

Sandwich ELISA

**Range:**

0.781-50 ng/mL (Sandwich ELISA)

**Recommended Dilutions:**

It is recommended that this reagent should be titrated in each testing system to obtain optimal results.

## Product Information

MP02994-1 targets AKT2 in immunoassays as a matched antibody pair. Validated in Sandwich ELISA.

Capture antibody: AKT2 Recombinant monoclonal antibody, PBS Only (Capture) 87121-1-PBS (252138G5). 100 µg. Concentration 1 mg/mL.

Detection antibody: AKT2 Recombinant monoclonal antibody, PBS Only (Detector) 87121-3-PBS (252138A5). 100 µg. Concentration 1 mg/mL.

Unconjugated rabbit recombinant monoclonal antibody pair in PBS only storage buffer at a concentration of 1 mg/mL, ready for conjugation. Created using Proteintech's proprietary in-house recombinant technology. Recombinant production enables unrivalled batch-to-batch consistency, easy scale-up, and future security of supply.

Matched antibody pairs are designed for use in a variety of assays and platforms that require matched antibody pairs.

Antibody use should be optimized for each application and assay.

## Storage

**Storage:**

Store at -80°C.

**Storage buffer:**

PBS only

For technical support and original validation data for this product please contact:

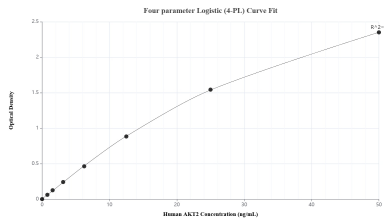
T: 1 (888) 4PTGLAB (1-888-478-4522) (toll free in USA), or 1(312) 455-8498 (outside USA)

E: proteintech@ptglab.com

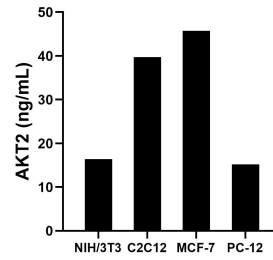
W: ptglab.com

This product is exclusively available under Proteintech Group brand and is not available to purchase from any other manufacturer.

## Selected Validation Data



Sandwich ELISA standard curve of MP02994-1, Human AKT2 Recombinant Matched Antibody Pair - PBS only. 87121-1-PBS was coated to a plate as the capture antibody and incubated with serial dilutions of standard Ag11770. 87121-3-PBS was HRP conjugated as the detection antibody. Range: 0.781-50 ng/mL.



The mean AKT2 concentration was determined to be 16.39 ng/mL in NIH/3T3 cell extract based on a 1.20 mg/mL extract load, 39.74 ng/mL in C2C12 cell extract based on a 1.20 mg/mL extract load, 45.76 ng/mL in MCF-7 cell extract based on a 1.20 mg/mL extract load and 15.24 ng/mL in PC-12 cell extract based on a 1.40 mg/mL extract load.