

# RRN3 Recombinant Matched Antibody Pair, PBS Only

Catalog Number:MP02997-1

## Capture Antibody Information

**Catalog Number:**

87046-2-PBS

**Host:**

Rabbit

**Isotype:**

IgG

**Purification Method:**

Protein A purification

**Clone ID:**

252129D5

**Reactivity:**

human

**Immunogen Catalog Number:**

Ag23207

**Conjugate:**

Unconjugated

**Full name:**

RRN3 RNA polymerase I transcription factor homolog (*S. cerevisiae*)

**Gene ID:**

54700

## Detection Antibody Information

**Catalog Number:**

87046-1-PBS

**Host:**

Rabbit

**Isotype:**

IgG

**Purification Method:**

Protein A purification

**Clone ID:**

252129D11

**Reactivity:**

human, mouse

**GenBank:**

BC132688

**Immunogen Catalog Number:**

Ag23207

**Conjugate:**

Unconjugated

**Full name:**

RRN3 RNA polymerase I transcription factor homolog (*S. cerevisiae*)

**Gene ID:**

54700

## Applications

**Tested Applications:**

Sandwich ELISA

**Range:**

156-5000 pg/mL (Sandwich ELISA)

**Recommended Dilutions:**

It is recommended that this reagent should be titrated in each testing system to obtain optimal results.

## Product Information

MP02997-1 targets RRN3 in immunoassays as a matched antibody pair. Validated in Sandwich ELISA.

Capture antibody: RRN3 Recombinant monoclonal antibody, PBS Only (Capture) 87046-2-PBS (252129D5). 100 µg. Concentration 1 mg/mL.

Detection antibody: RRN3 Recombinant monoclonal antibody, PBS Only (Detector) 87046-1-PBS (252129D11). 100 µg. Concentration 1 mg/mL.

Unconjugated rabbit recombinant monoclonal antibody pair in PBS only storage buffer at a concentration of 1 mg/mL, ready for conjugation. Created using Proteintech's proprietary in-house recombinant technology. Recombinant production enables unrivalled batch-to-batch consistency, easy scale-up, and future security of supply.

Matched antibody pairs are designed for use in a variety of assays and platforms that require matched antibody pairs.

Antibody use should be optimized for each application and assay.

## Storage

**Storage:**

Store at -80°C.

**Storage buffer:**

PBS only

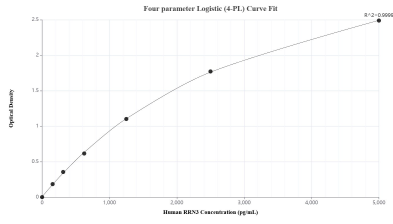
For technical support and original validation data for this product please contact:

T: 1 (888) 4PTGLAB (1-888-478-4522) (toll free in USA), or 1(312) 455-8498 (outside USA)

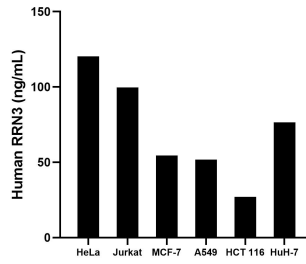
E: [proteintech@ptglab.com](mailto:proteintech@ptglab.com)  
W: [ptglab.com](http://ptglab.com)

**This product is exclusively available under Proteintech Group brand and is not available to purchase from any other manufacturer.**

## Selected Validation Data



Sandwich ELISA standard curve of MP02997-1, Human RRN3 Recombinant Matched Antibody Pair - PBS only. 87046-2-PBS was coated to a plate as the capture antibody and incubated with serial dilutions of standard Ag23207. 87046-1-PBS was HRP conjugated as the detection antibody. Range: 156-5000 pg/mL.



The mean RRN3 concentration was determined to be 120.4 ng/mL in HeLa cell extract based on a 1.2 mg/mL extract load, 99.7 ng/mL in Jurkat cell extract based on a 1.2 mg/mL extract load, 54.5 ng/mL in MCF-7 cell extract based on a 1.2 mg/mL extract load, 51.8 ng/mL in A549 cell extract based on a 1.2 mg/mL extract load, 27.1 ng/mL in HCT 116 extract based on a 1.2 mg/mL extract load and 76.5 ng/mL in HuH-7 cell extract based on a 1.2 mg/mL extract load.