

For Research Use Only



ELK1 Recombinant Matched Antibody Pair, PBS Only

Catalog Number:MP02998-1

Capture Antibody Information

Catalog Number:

87009-1-PBS

Host:

Rabbit

Isotype:

IgG

Purification Method:

Protein A purification

Clone ID:

252085F8

Reactivity:

human

Immunogen Catalog Number:

Ag26683

Conjugate:

Unconjugated

Full name:

ELK1, member of ETS oncogene family

Gene ID:

2002

Detection Antibody Information

Catalog Number:

87009-2-PBS

Host:

Rabbit

Isotype:

IgG

Purification Method:

Protein A purification

Clone ID:

252085B2

Reactivity:

human

GenBank:

BC056150

Immunogen Catalog Number:

Ag26683

Conjugate:

Unconjugated

Full name:

ELK1, member of ETS oncogene family

Gene ID:

2002

Applications

Tested Applications:

Sandwich ELISA

Range:

0.781-50 ng/mL (Sandwich ELISA)

Recommended Dilutions:

It is recommended that this reagent should be titrated in each testing system to obtain optimal results.

Product Information

MP02998-1 targets ELK1 in immunoassays as a matched antibody pair. Validated in Sandwich ELISA.

Capture antibody: ELK1 Recombinant monoclonal antibody, PBS Only (Capture) 87009-1-PBS (252085F8). 100 µg. Concentration 1 mg/mL.

Detection antibody: ELK1 Recombinant monoclonal antibody, PBS Only (Detector) 87009-2-PBS (252085B2). 100 µg. Concentration 1 mg/mL.

Unconjugated rabbit recombinant monoclonal antibody pair in PBS only storage buffer at a concentration of 1 mg/mL, ready for conjugation. Created using Proteintech's proprietary in-house recombinant technology. Recombinant production enables unrivalled batch-to-batch consistency, easy scale-up, and future security of supply.

Matched antibody pairs are designed for use in a variety of assays and platforms that require matched antibody pairs.

Antibody use should be optimized for each application and assay.

Storage

Storage:

Store at -80°C.

Storage buffer:

PBS only

For technical support and original validation data for this product please contact:

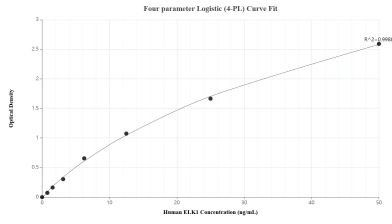
T: 1 (888) 4PTGLAB (1-888-478-4522) (toll free in USA), or 1(312) 455-8498 (outside USA)

E: proteintech@ptglab.com

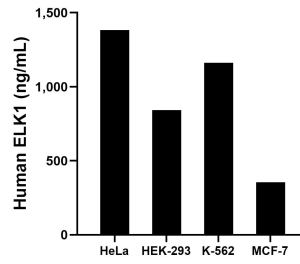
W: ptglab.com

This product is exclusively available under Proteintech Group brand and is not available to purchase from any other manufacturer.

Selected Validation Data



Sandwich ELISA standard curve of MP02998-1, Human ELK1 Recombinant Matched Antibody Pair - PBS only. 87009-1-PBS was coated to a plate as the capture antibody and incubated with serial dilutions of standard Ag26683. 87009-2-PBS was HRP conjugated as the detection antibody. Range: 0.781-50 ng/mL



The mean ELK1 concentration was determined to be 1,382.52 ng/mL in HeLa cell extract based on a 1.20 mg/mL extract load, 841.80 ng/mL in HEK-293 cell extract based on a 1.20 mg/mL extract load, 1,161.24 ng/mL in K-562 cell extract based on a 1.20 mg/mL extract load and 354.56 ng/mL in MCF-7 cell extract based on a 1.20 mg/mL extract load.