

For Research Use Only

# CCL11/Eotaxin Recombinant Matched Antibody Pair, PBS Only



Catalog Number:MP03000-1

## Capture Antibody Information

Catalog Number:  
87475-2-PBS

Host:  
Rabbit

Isotype:  
IgG

Purification Method:  
Protein A purification

Clone ID:  
251987E11

Reactivity:  
human

Immunogen Catalog Number:  
Eg5095

Conjugate:  
Unconjugated

Full name:  
chemokine (C-C motif) ligand 11

Gene ID:  
6356

## Detection Antibody Information

Catalog Number:  
87475-1-PBS

Host:  
Rabbit

Isotype:  
IgG

Purification Method:  
Protein A purification

Clone ID:  
251987D1

Reactivity:  
human

GenBank:  
BC017850

Immunogen Catalog Number:  
Eg5095

Conjugate:  
Unconjugated

Full name:  
chemokine (C-C motif) ligand 11

Gene ID:  
6356

## Applications

Tested Applications:  
Sandwich ELISA

Range:  
46.9-3000 pg/mL (Sandwich ELISA)

Recommended Dilutions:  
It is recommended that this reagent should be titrated in each testing system to obtain optimal results.

## Product Information

MP03000-1 targets CCL11/Eotaxin in immunoassays as a matched antibody pair. Validated in Sandwich ELISA.

Capture antibody: CCL11/Eotaxin Recombinant monoclonal antibody, PBS Only (Capture) 87475-2-PBS (251987E11). 100 µg. Concentration 1 mg/mL.

Detection antibody: CCL11/Eotaxin Recombinant monoclonal antibody, PBS Only (Detector) 87475-1-PBS (251987D1). 100 µg. Concentration 1 mg/mL.

Unconjugated rabbit recombinant monoclonal antibody pair in PBS only storage buffer at a concentration of 1 mg/mL, ready for conjugation. Created using Proteintech's proprietary in-house recombinant technology. Recombinant production enables unrivalled batch-to-batch consistency, easy scale-up, and future security of supply.

Matched antibody pairs are designed for use in a variety of assays and platforms that require matched antibody pairs.

Antibody use should be optimized for each application and assay.

## Storage

Storage:  
Store at -80°C.  
Storage buffer:  
PBS only

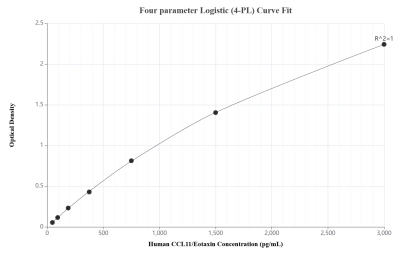
For technical support and original validation data for this product please contact:

T: 1 (888) 4PTGLAB (1-888-478-4522) (toll free in USA), or 1(312) 455-8498 (outside USA)

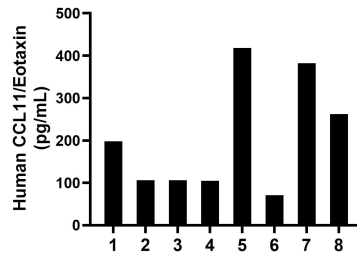
E: [proteintech@ptglab.com](mailto:proteintech@ptglab.com)  
W: [ptglab.com](http://ptglab.com)

This product is exclusively available under Proteintech Group brand and is not available to purchase from any other manufacturer.

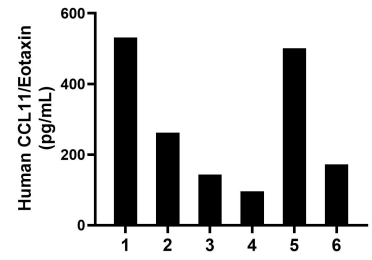
## Selected Validation Data



Sandwich ELISA standard curve of MP03000-1, Human CCL11/Eotaxin Recombinant Matched Antibody Pair - PBS only. 87475-2-PBS was coated to a plate as the capture antibody and incubated with serial dilutions of standard Eg5095. 87475-1-PBS was HRP conjugated as the detection antibody. Range: 46.9-3000 pg/mL.



Serum of eight individual healthy human donors was measured. The CCL11/Eotaxin concentration of detected samples was determined to be 206.0 pg/mL with a range of 70.9-418.0 pg/mL.



Plasma of six individual healthy human donors was measured. The CCL11/Eotaxin concentration of detected samples was determined to be 284.4 pg/mL with a range of 95.7-531.2 pg/mL.