

For Research Use Only

# C3/C3b/C3c Recombinant Matched Antibody Pair, PBS Only



Catalog Number:MP03006-2

## Capture Antibody Information

Catalog Number:  
87386-5-PBS

Host:  
Rabbit

Isotype:  
IgG

Purification Method:  
Protein A purification

Clone ID:  
252159D3

Reactivity:  
human

Immunogen Catalog Number:  
Eg4880

Conjugate:  
Unconjugated

Full name:  
complement component 3

Gene ID:  
718

## Detection Antibody Information

Catalog Number:  
87386-4-PBS

Host:  
Rabbit

Isotype:  
IgG

Purification Method:  
Protein A purification

Clone ID:  
252159D7

Reactivity:  
human

GenBank:  
NM\_000064.4

Immunogen Catalog Number:  
Eg4880

Conjugate:  
Unconjugated

Full name:  
complement component 3

Gene ID:  
718

## Applications

Tested Applications:  
Sandwich ELISA

Range:  
0.156-10 ng/mL (Sandwich ELISA)

Recommended Dilutions:  
It is recommended that this reagent should be titrated in each testing system to obtain optimal results.

## Product Information

MP03006-2 targets C3/C3b/C3c in immunoassays as a matched antibody pair. Validated in Sandwich ELISA.

Capture antibody: Complement component C3 Recombinant monoclonal antibody, PBS Only (Capture) 87386-5-PBS (252159D3). 100 µg. Concentration 1 mg/mL.

Detection antibody: Complement component C3 Recombinant monoclonal antibody, PBS Only (Detector) 87386-4-PBS (252159D7). 100 µg. Concentration 1 mg/mL.

Unconjugated rabbit recombinant monoclonal antibody pair in PBS only storage buffer at a concentration of 1 mg/mL, ready for conjugation. Created using Proteintech's proprietary in-house recombinant technology. Recombinant production enables unrivalled batch-to-batch consistency, easy scale-up, and future security of supply.

Matched antibody pairs are designed for use in a variety of assays and platforms that require matched antibody pairs.

Antibody use should be optimized for each application and assay.

## Storage

Storage:  
Store at -80°C.  
Storage buffer:  
PBS only

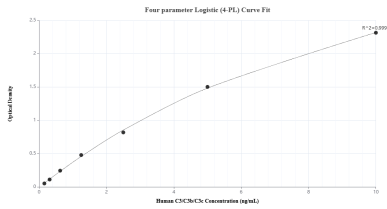
For technical support and original validation data for this product please contact:

T: 1 (888) 4PTGLAB (1-888-478-4522) (toll free in USA), or 1(312) 455-8498 (outside USA)

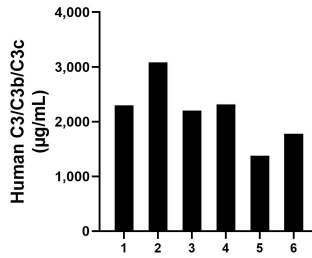
E: [proteintech@ptglab.com](mailto:proteintech@ptglab.com)  
W: [ptglab.com](http://ptglab.com)

This product is exclusively available under Proteintech Group brand and is not available to purchase from any other manufacturer.

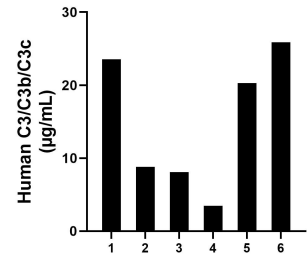
## Selected Validation Data



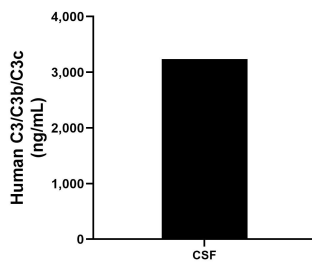
Sandwich ELISA standard curve of MP03006-2, Human C3/C3b/C3c Recombinant Matched Antibody Pair - PBS only. 87386-5-PBS was coated to a plate as the capture antibody and incubated with serial dilutions of standard Eg4880. 87386-4-PBS was HRP conjugated as the detection antibody. Range: 0.156-10 ng/mL



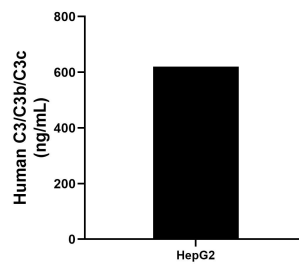
Plasma of six individual healthy human donors was measured. The human C3/C3b/C3c concentration of detected samples was determined to be 2,175.94 µg/mL with a range of 1,379.7 - 3,080.62 µg/mL.



Saliva of six individual healthy human donors was measured. The human C3/C3b/C3c concentration of detected samples was determined to be 15.02 µg/mL with a range of 3.49 - 25.88 µg/mL.



CSF of one individual healthy human donors was measured. The human C3/C3b/C3c concentration of detected samples was determined to be 3,234.93 ng/mL.



HepG2 (human hepatocellular carcinoma cells) were cultured in DMEM supplemented with 10% fetal bovine serum, 2.5 mM L-glutamine, 100 U/mL penicillin, and 100 µg/mL streptomycin sulfate. An aliquot of the cell culture supernate was removed, assayed for human C3/C3b/C3c, and measured 620.71 ng/mL.