

For Research Use Only

# LSP1 Recombinant Matched Antibody Pair, PBS Only



Catalog Number:MP03007-1

## Capture Antibody Information

Catalog Number:  
87378-4-PBS

Host:  
Rabbit

Isotype:  
IgG

Purification Method:  
Protein A purification

Clone ID:  
252179C9

Reactivity:  
human

Immunogen Catalog Number:  
Eg5464

Conjugate:  
Unconjugated

Full name:  
lymphocyte-specific protein 1

Gene ID:  
4046

## Detection Antibody Information

Catalog Number:  
87378-3-PBS

Host:  
Rabbit

Isotype:  
IgG

Purification Method:  
Protein A purification

Clone ID:  
252179C4

Reactivity:  
human

GenBank:  
NM\_002339.2

Immunogen Catalog Number:  
Eg5464

Conjugate:  
Unconjugated

Full name:  
lymphocyte-specific protein 1

Gene ID:  
4046

## Applications

Tested Applications:  
Cytometric bead array

Range:  
0.312-40 ng/mL (Cytometric Bead Array)

Recommended Dilutions:  
It is recommended that this reagent should be titrated in each testing system to obtain optimal results.

## Product Information

MP03007-1 targets LSP1 in immunoassays as a matched antibody pair. Validated in Cytometric bead array.

Capture antibody: LSP1 Recombinant monoclonal antibody, PBS Only (Capture) 87378-4-PBS (252179C9). 100 µg. Concentration 1 mg/mL.

Detection antibody: LSP1 Recombinant monoclonal antibody, PBS Only (Detector) 87378-3-PBS (252179C4). 100 µg. Concentration 1 mg/mL.

Unconjugated rabbit recombinant monoclonal antibody pair in PBS only storage buffer at a concentration of 1 mg/mL, ready for conjugation. Created using Proteintech's proprietary in-house recombinant technology. Recombinant production enables unrivalled batch-to-batch consistency, easy scale-up, and future security of supply.

Matched antibody pairs are designed for use in a variety of assays and platforms that require matched antibody pairs.

Antibody use should be optimized for each application and assay.

## Storage

Storage:  
Store at -80°C.  
Storage buffer:  
PBS only

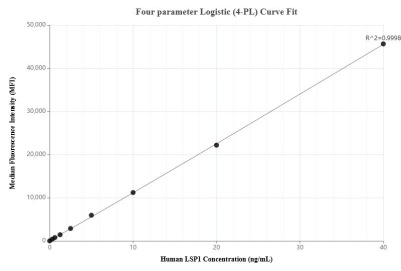
For technical support and original validation data for this product please contact:

T: 1 (888) 4PTGLAB (1-888-478-4522) (toll free in USA), or 1(312) 455-8498 (outside USA)

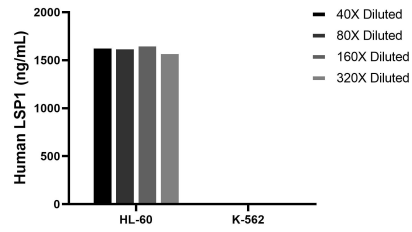
E: [proteintech@ptglab.com](mailto:proteintech@ptglab.com)  
W: [ptglab.com](http://ptglab.com)

This product is exclusively available under Proteintech Group brand and is not available to purchase from any other manufacturer.

## Selected Validation Data



Cytometric bead array standard curve of MP03007-1, LSP1 Recombinant Matched Antibody Pair, PBS Only. Capture antibody: 87378-4-PBS. Detection antibody: 87378-3-PBS. Standard: Eg5464. Range: 0.312-40 ng/mL



The mean LSP1 concentration was determined to be 1635.5 ng/mL in HL-60 cell extract based on a 1.2 mg/mL extract load, K-562 cell extract were served as a negative control.