

For Research Use Only

# CCL18 Recombinant Matched Antibody Pair, PBS Only



Catalog Number:MP03008-2

## Capture Antibody Information

**Catalog Number:**  
87440-4-PBS  
**Host:**  
Rabbit  
**Isotype:**  
IgG  
**Purification Method:**  
Protein A purification

**Clone ID:**  
251591H7  
**Reactivity:**  
human  
**Immunogen Catalog Number:**  
Eg5093

**Conjugate:**  
Unconjugated  
**Full name:**  
chemokine (C-C motif) ligand 18  
(pulmonary and activation-regulated)  
**Gene ID:**  
6362

## Detection Antibody Information

**Catalog Number:**  
87440-3-PBS  
**Host:**  
Rabbit  
**Isotype:**  
IgG  
**Purification Method:**  
Protein A purification

**Clone ID:**  
251591E11  
**Reactivity:**  
human  
**GenBank:**  
BC069700  
**Immunogen Catalog Number:**  
Eg5093

**Conjugate:**  
Unconjugated  
**Full name:**  
chemokine (C-C motif) ligand 18  
(pulmonary and activation-regulated)  
**Gene ID:**  
6362

## Applications

**Tested Applications:**  
Sandwich ELISA

**Range:**  
39.1-1250 pg/mL (Sandwich ELISA)

**Recommended Dilutions:**  
It is recommended that this reagent should be titrated in each testing system to obtain optimal results.

## Product Information

MP03008-2 targets CCL18 in immunoassays as a matched antibody pair. Validated in Sandwich ELISA.

Capture antibody: CCL18 Recombinant monoclonal antibody, PBS Only (Capture) 87440-4-PBS (251591H7). 100 µg. Concentration 1 mg/mL.

Detection antibody: CCL18 Recombinant monoclonal antibody, PBS Only (Detector) 87440-3-PBS (251591E11). 100 µg. Concentration 1 mg/mL.

Unconjugated rabbit recombinant monoclonal antibody pair in PBS only storage buffer at a concentration of 1 mg/mL, ready for conjugation. Created using Proteintech's proprietary in-house recombinant technology. Recombinant production enables unrivalled batch-to-batch consistency, easy scale-up, and future security of supply.

Matched antibody pairs are designed for use in a variety of assays and platforms that require matched antibody pairs.

Antibody use should be optimized for each application and assay.

## Storage

**Storage:**  
Store at -80°C.  
**Storage buffer:**  
PBS only

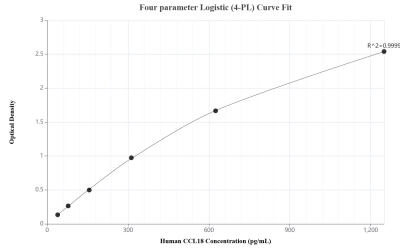
For technical support and original validation data for this product please contact:

T: 1 (888) 4PTGLAB (1-888-478-4522) (toll free in USA), or 1(312) 455-8498 (outside USA)

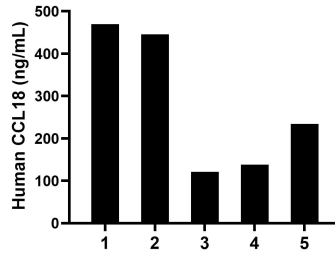
E: [proteintech@ptglab.com](mailto:proteintech@ptglab.com)  
W: [ptglab.com](http://ptglab.com)

This product is exclusively available under Proteintech Group brand and is not available to purchase from any other manufacturer.

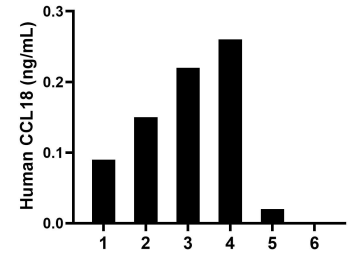
## Selected Validation Data



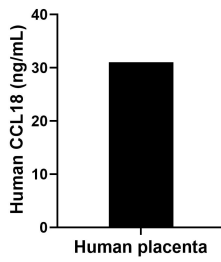
Sandwich ELISA standard curve of MP03008-2, Human CCL18 Recombinant Matched Antibody Pair - PBS only. 87440-4-PBS was coated to a plate as the capture antibody and incubated with serial dilutions of standard Eg5093. 87440-3-PBS was HRP conjugated as the detection antibody. Range: 39.1-1250 pg/mL



Plasma of five individual healthy human donors was measured. The CCL18 concentration of detected samples was determined to be 281.8 ng/mL with a range of 121.1-469.5 ng/mL.



Urine of six individual healthy human donors was measured. The CCL18 concentration of detected samples was determined to be 0.2 ng/mL with a range of ND-0.3 ng/mL.



The mean CCL18 concentration was determined to be 31.0 ng/mL in human placenta extract based on a 3.8 mg/mL extract load.