

For Research Use Only

# Integrin Beta 4 Recombinant Matched Antibody Pair, PBS Only



Catalog Number:MP03021-1

## Capture Antibody Information

Catalog Number:  
87416-4-PBS

Host:  
Rabbit

Isotype:  
IgG

Purification Method:  
Protein A purification

Clone ID:  
252740A8

Reactivity:  
human

Immunogen Catalog Number:  
Eg10479

Conjugate:  
Unconjugated

Full name:  
integrin, beta 4

Gene ID:  
3691

## Detection Antibody Information

Catalog Number:  
87416-3-PBS

Host:  
Rabbit

Isotype:  
IgG

Purification Method:  
Protein A purification

Clone ID:  
252740E2

Reactivity:  
human

GenBank:  
Immunogen Catalog Number:  
Eg10479

Conjugate:  
Unconjugated

Full name:  
integrin, beta 4

Gene ID:  
3691

## Applications

Tested Applications:  
Cytometric bead array, Sandwich  
ELISA

Range:  
0.156-20 ng/mL (Cytometric Bead  
Array)  
78.1-5000 pg/mL (Sandwich ELISA)

Recommended Dilutions:  
It is recommended that this reagent  
should be titrated in each testing  
system to obtain optimal results.

## Product Information

MP03021-1 targets Integrin Beta 4 in immunoassays as a matched antibody pair. Validated in Cytometric bead array, Sandwich ELISA.

Capture antibody: ITB4 Recombinant monoclonal antibody, PBS Only (Capture) 87416-4-PBS (252740A8). 100 µg. Concentration 1 mg/mL.

Detection antibody: ITB4 Recombinant monoclonal antibody, PBS Only (Detector) 87416-3-PBS (252740E2). 100 µg. Concentration 1 mg/mL.

Unconjugated rabbit recombinant monoclonal antibody pair in PBS only storage buffer at a concentration of 1 mg/mL, ready for conjugation. Created using Proteintech's proprietary in-house recombinant technology. Recombinant production enables unrivalled batch-to-batch consistency, easy scale-up, and future security of supply.

Matched antibody pairs are designed for use in a variety of assays and platforms that require matched antibody pairs.

Antibody use should be optimized for each application and assay.

## Storage

Storage:  
Store at -80°C.  
Storage buffer:  
PBS only

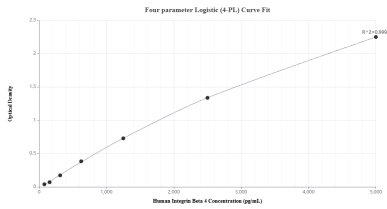
For technical support and original validation data for this product please contact:

T: 1 (888) 4PTGLAB (1-888-478-4522) (toll free  
in USA), or 1(312) 455-8498 (outside USA)

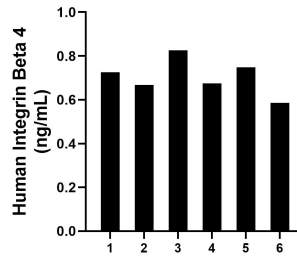
E: [proteintech@ptglab.com](mailto:proteintech@ptglab.com)  
W: [ptglab.com](http://ptglab.com)

This product is exclusively available under Proteintech Group brand and is not available to purchase from any other manufacturer.

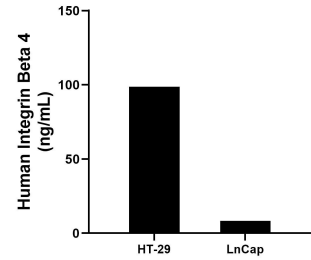
## Selected Validation Data



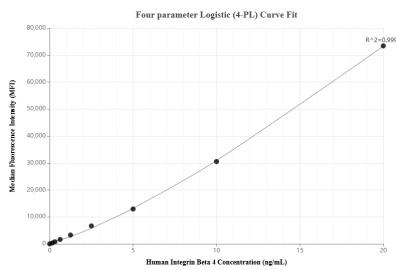
Sandwich ELISA standard curve of MP03021-1, Human Integrin Beta 4 Recombinant Matched Antibody Pair - PBS only. 87416-4-PBS was coated to a plate as the capture antibody and incubated with serial dilutions of standard Eg4880. 87416-3-PBS was HRP conjugated as the detection antibody. Range: 78.1-5000 pg/mL



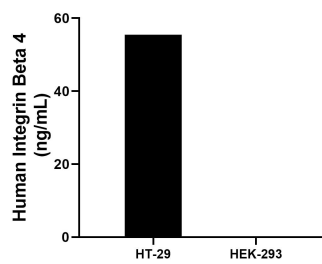
Plasma of six individual healthy human donors was measured. The human Integrin Beta 4 concentration of detected samples was determined to be 0.70 ng/mL with a range of 0.59 - 0.83 ng/mL.



The mean Integrin Beta 4 concentration was determined to be 98.74 ng/mL in HT-29 cell extract based on a 1.1 mg/mL extract load and 8.34 ng/mL in LnCap cell extract based on a 1.2 mg/mL extract load.



Cytometric bead array standard curve of MP03021-1, Integrin Beta 4 Recombinant Matched Antibody Pair, PBS Only. Capture antibody: 87416-4-PBS. Detection antibody: 87416-3-PBS. Standard: Eg10479. Range: 0.156-20 ng/mL



The mean Integrin Beta 4 concentration was determined to be 55.5 ng/mL in HT-29 cell extract based on a 1.7 mg/mL extract load, HEK-293 cell extract were served as a negative control.