

For Research Use Only

# p70(S6K) Recombinant Matched Antibody Pair, PBS Only



Catalog Number:MP03028-1

## Capture Antibody Information

Catalog Number:

87391-4-PBS

Host:

Rabbit

Isotype:

IgG

Purification Method:

Protein A purification

Clone ID:

252761A8

Reactivity:

human

Immunogen Catalog Number:

Ag5883

Conjugate:

Unconjugated

Full name:

ribosomal protein S6 kinase, 70kDa, polypeptide 1

Gene ID:

6198

## Detection Antibody Information

Catalog Number:

87391-3-PBS

Host:

Rabbit

Isotype:

IgG

Purification Method:

Protein A purification

Clone ID:

252761H5

Reactivity:

human

GenBank:

BC053365

Immunogen Catalog Number:

Ag5883

Conjugate:

Unconjugated

Full name:

ribosomal protein S6 kinase, 70kDa, polypeptide 1

Gene ID:

6198

## Applications

Tested Applications:

Sandwich ELISA

Range:

97.7-6250 pg/mL (Sandwich ELISA)

Recommended Dilutions:

It is recommended that this reagent should be titrated in each testing system to obtain optimal results.

## Product Information

MP03028-1 targets p70(S6K) in immunoassays as a matched antibody pair. Validated in Sandwich ELISA.

Capture antibody: p70(S6K) Recombinant monoclonal antibody, PBS Only (Capture) 87391-4-PBS (252761A8). 100 µg. Concentration 1 mg/mL.

Detection antibody: p70(S6K) Recombinant monoclonal antibody, PBS Only (Detector) 87391-3-PBS (252761H5). 100 µg. Concentration 1 mg/mL.

Unconjugated rabbit recombinant monoclonal antibody pair in PBS only storage buffer at a concentration of 1 mg/mL, ready for conjugation. Created using Proteintech's proprietary in-house recombinant technology. Recombinant production enables unrivalled batch-to-batch consistency, easy scale-up, and future security of supply.

Matched antibody pairs are designed for use in a variety of assays and platforms that require matched antibody pairs.

Antibody use should be optimized for each application and assay.

## Storage

Storage:

Store at -80°C.

Storage buffer:

PBS only

For technical support and original validation data for this product please contact:

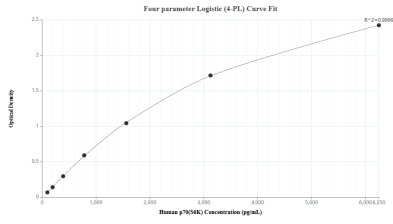
T: 1 (888) 4PTGLAB (1-888-478-4522) (toll free in USA), or 1(312) 455-8498 (outside USA)

E: [proteintech@ptglab.com](mailto:proteintech@ptglab.com)

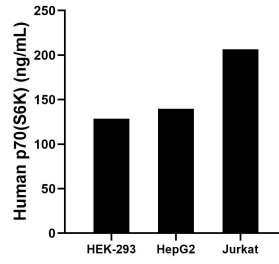
W: [ptglab.com](http://ptglab.com)

This product is exclusively available under Proteintech Group brand and is not available to purchase from any other manufacturer.

## Selected Validation Data



Sandwich ELISA standard curve of MP03028-1, Human p70(S6K) Recombinant Matched Antibody Pair - PBS only. 87391-4-PBS was coated to a plate as the capture antibody and incubated with serial dilutions of standard Ag5883. 87391-3-PBS was HRP conjugated as the detection antibody. Range: 97.7-6250 pg/mL



The mean p70(S6K) concentration was determined to be 128.81 ng/mL in HEK-293 cell extract based on a 1.2 mg/mL extract load, 139.58 ng/mL in HepG2 cell extract based on a 1.2 mg/mL extract load and 206.44 ng/mL in Jurkat cell extract based on a 1.2 mg/mL extract load.