

For Research Use Only

Mouse CD11b Recombinant Matched Antibody Pair, PBS Only



Catalog Number:MP03033-1

Capture Antibody Information

Catalog Number:
87419-3-PBS

Host:
Rabbit

Isotype:
IgG

Purification Method:
Protein A purification

Clone ID:
252750B3

Reactivity:
mouse

Immunogen Catalog Number:
Eg10463

Conjugate:
Unconjugated

Full name:
integrin alpha M

Gene ID:
16409

Detection Antibody Information

Catalog Number:
87419-2-PBS

Host:
Rabbit

Isotype:
IgG

Purification Method:
Protein A purification

Clone ID:
252750C5

Reactivity:
mouse

GenBank:
Immunogen Catalog Number:
Eg10463

Conjugate:
Unconjugated

Full name:
integrin alpha M

Gene ID:
16409

Applications

Tested Applications:
Cytometric bead array

Range:
0.312-40 ng/mL (Cytometric Bead Array)

Recommended Dilutions:
It is recommended that this reagent should be titrated in each testing system to obtain optimal results.

Product Information

MP03033-1 targets CD11b in immunoassays as a matched antibody pair. Validated in Cytometric bead array.

Capture antibody: Mouse ITAM Recombinant monoclonal antibody, PBS Only (Capture) 87419-3-PBS (252750B3). 100 µg. Concentration 1 mg/mL.

Detection antibody: Mouse ITAM Recombinant monoclonal antibody, PBS Only (Detector) 87419-2-PBS (252750C5). 100 µg. Concentration 1 mg/mL.

Unconjugated rabbit recombinant monoclonal antibody pair in PBS only storage buffer at a concentration of 1 mg/mL, ready for conjugation. Created using Proteintech's proprietary in-house recombinant technology. Recombinant production enables unrivalled batch-to-batch consistency, easy scale-up, and future security of supply.

Matched antibody pairs are designed for use in a variety of assays and platforms that require matched antibody pairs.

Antibody use should be optimized for each application and assay.

Storage

Storage:
Store at -80°C.
Storage buffer:
PBS only

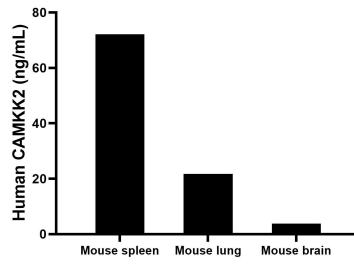
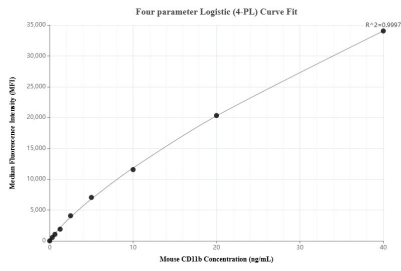
For technical support and original validation data for this product please contact:

T: 1 (888) 4PTGLAB (1-888-478-4522) (toll free in USA), or 1(312) 455-8498 (outside USA)

E: proteintech@ptglab.com
W: ptglab.com

This product is exclusively available under Proteintech Group brand and is not available to purchase from any other manufacturer.

Selected Validation Data



Cytometric bead array standard curve of MP03033-1, MOUSE CD11b Recombinant Matched Antibody Pair, PBS Only. Capture antibody: 87419-3-PBS. Detection antibody: 87419-2-PBS. Standard: Eg10463. Range: 0.312-40 ng/mL.

The mean CD11b concentration was determined to be 72.1 ng/mL in mouse spleen tissue extract based on a 6.4 mg/mL extract load, 21.7 ng/mL in mouse lung tissue extract based on a 5.0 mg/mL extract load, 3.8 ng/mL in mouse brain tissue extract based on a 3.2 mg/mL extract load.