

For Research Use Only

Mouse Trypsin 2/PRSS2 Recombinant Matched Antibody Pair, PBS Only



Catalog Number:MP03038-1

Capture Antibody Information

Catalog Number:
87469-3-PBS

Host:
Rabbit

Isotype:
IgG

Purification Method:
Protein A purification

Clone ID:
250391A6

Reactivity:
mouse

Immunogen Catalog Number:
Eg3056

Conjugate:
Unconjugated

Full name:
protease, serine, 2

Gene ID:
22072

Detection Antibody Information

Catalog Number:
87469-2-PBS

Host:
Rabbit

Isotype:
IgG

Purification Method:
Protein A purification

Clone ID:
250391H4

Reactivity:
mouse

GenBank:
NM_009430.2

Immunogen Catalog Number:
Eg3056

Conjugate:
Unconjugated

Full name:
protease, serine, 2

Gene ID:
22072

Applications

Tested Applications:
Cytometric bead array

Range:
0.156-20 ng/mL (Cytometric Bead Array)

Recommended Dilutions:
It is recommended that this reagent should be titrated in each testing system to obtain optimal results.

Product Information

MP03038-1 targets Trypsin 2/PRSS2 in immunoassays as a matched antibody pair. Validated in Cytometric bead array.

Capture antibody: Mouse Prss2 Recombinant monoclonal antibody, PBS Only (Capture) 87469-3-PBS (250391A6). 100 µg. Concentration 1 mg/mL.

Detection antibody: Mouse Prss2 Recombinant monoclonal antibody, PBS Only (Detector) 87469-2-PBS (250391H4). 100 µg. Concentration 1 mg/mL.

Unconjugated rabbit recombinant monoclonal antibody pair in PBS only storage buffer at a concentration of 1 mg/mL, ready for conjugation. Created using Proteintech's proprietary in-house recombinant technology. Recombinant production enables unrivalled batch-to-batch consistency, easy scale-up, and future security of supply.

Matched antibody pairs are designed for use in a variety of assays and platforms that require matched antibody pairs.

Antibody use should be optimized for each application and assay.

Storage

Storage:
Store at -80°C.
Storage buffer:
PBS only

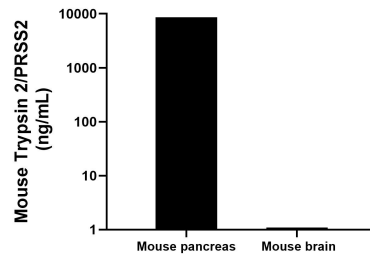
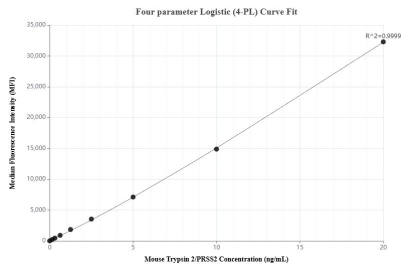
For technical support and original validation data for this product please contact:

T: 1 (888) 4PTGLAB (1-888-478-4522) (toll free in USA), or 1(312) 455-8498 (outside USA)

E: proteintech@ptglab.com
W: ptglab.com

This product is exclusively available under Proteintech Group brand and is not available to purchase from any other manufacturer.

Selected Validation Data



Cytometric bead array standard curve of MP03038-1, MOUSE Trypsin 2/PRSS2 Recombinant Matched Antibody Pair, PBS Only. Capture antibody: 87469-3-PBS. Detection antibody: 87469-2-PBS. Standard: Eg3056. Range: 0.156-20 ng/mL

The mean Trypsin 2/PRSS2 concentration was determined to be 8581.8 ng/mL in Mouse pancreas tissue extract based on a 10.6 mg/mL extract load, 1.1 ng/mL in Mouse brain tissue extract based on a 3.2 mg/mL extract load.