

For Research Use Only

Ephrin A1 Recombinant Matched Antibody Pair, PBS Only



Catalog Number:MP03040-1

Capture Antibody Information

Catalog Number:

87470-4-PBS

Host:

Rabbit

Isotype:

IgG

Purification Method:

Protein A purification

Clone ID:

252222B8

Reactivity:

human

Immunogen Catalog Number:

Eg5498

Conjugate:

Unconjugated

Full name:

ephrin-A1

Gene ID:

1942

Detection Antibody Information

Catalog Number:

87470-3-PBS

Host:

Rabbit

Isotype:

IgG

Purification Method:

Protein A purification

Clone ID:

252222D8

Reactivity:

human

GenBank:

NM_004428.3

Immunogen Catalog Number:

Eg5498

Conjugate:

Unconjugated

Full name:

ephrin-A1

Gene ID:

1942

Applications

Tested Applications:

Cytometric bead array

Range:

0.156-20 ng/mL (Cytometric Bead Array)

Recommended Dilutions:

It is recommended that this reagent should be titrated in each testing system to obtain optimal results.

Product Information

MP03040-1 targets Ephrin A1 in immunoassays as a matched antibody pair. Validated in Cytometric bead array.

Capture antibody: Ephrin A1 Recombinant monoclonal antibody, PBS Only (Capture) 87470-4-PBS (252222B8). 100 µg. Concentration 1 mg/mL.

Detection antibody: Ephrin A1 Recombinant monoclonal antibody, PBS Only (Detector) 87470-3-PBS (252222D8). 100 µg. Concentration 1 mg/mL.

Unconjugated rabbit recombinant monoclonal antibody pair in PBS only storage buffer at a concentration of 1 mg/mL, ready for conjugation. Created using Proteintech's proprietary in-house recombinant technology. Recombinant production enables unrivalled batch-to-batch consistency, easy scale-up, and future security of supply.

Matched antibody pairs are designed for use in a variety of assays and platforms that require matched antibody pairs.

Antibody use should be optimized for each application and assay.

Storage

Storage:

Store at -80°C.

Storage buffer:

PBS only

For technical support and original validation data for this product please contact:

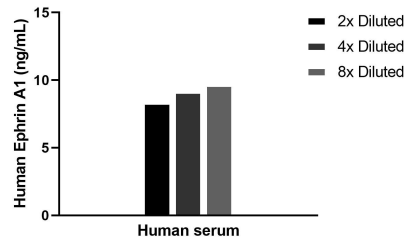
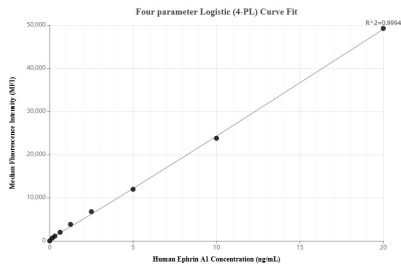
T: 1 (888) 4PTGLAB (1-888-478-4522) (toll free in USA), or 1(312) 455-8498 (outside USA)

E: proteintech@ptglab.com

W: ptglab.com

This product is exclusively available under Proteintech Group brand and is not available to purchase from any other manufacturer.

Selected Validation Data



Cytometric bead array standard curve of MP03040-1, Ephrin A1 Recombinant Matched Antibody Pair, PBS Only. Capture antibody: 87470-4-PBS. Detection antibody: 87470-3-PBS. Standard: Eg5498. Range: 0.156-20 ng/mL

The mean Ephrin A1 concentration was determined to be 9.0 ng/mL in Human serum.