

For Research Use Only

Integrin alpha-4 Recombinant Matched Antibody Pair, PBS Only



Catalog Number:MP03046-1

Capture Antibody Information

Catalog Number:

87459-3-PBS

Host:

Rabbit

Isotype:

IgG

Purification Method:

Protein A purification

Clone ID:

252683C12

Reactivity:

human

Immunogen Catalog Number:

Eg10494

Conjugate:

Unconjugated

Full name:

integrin, alpha 4 (antigen CD49D, alpha 4 subunit of VLA-4 receptor)

Gene ID:

3676

Detection Antibody Information

Catalog Number:

87459-5-PBS

Host:

Rabbit

Isotype:

IgG

Purification Method:

Protein A purification

Clone ID:

252683H2

Reactivity:

human

GenBank:

Immunogen Catalog Number:

Eg10494

Conjugate:

Unconjugated

Full name:

integrin, alpha 4 (antigen CD49D, alpha 4 subunit of VLA-4 receptor)

Gene ID:

3676

Applications

Tested Applications:

Cytometric bead array

Range:

1,562-200 ng/mL (Cytometric Bead Array)

Recommended Dilutions:

It is recommended that this reagent should be titrated in each testing system to obtain optimal results.

Product Information

MP03046-1 targets Integrin alpha-4 in immunoassays as a matched antibody pair. Validated in Cytometric bead array.

Capture antibody: ITA4 Recombinant monoclonal antibody, PBS Only (Capture) 87459-3-PBS (252683C12). 100 µg. Concentration 1 mg/mL.

Detection antibody: ITA4 Recombinant monoclonal antibody, PBS Only (Detector) 87459-5-PBS (252683H2). 100 µg. Concentration 1 mg/mL.

Unconjugated rabbit recombinant monoclonal antibody pair in PBS only storage buffer at a concentration of 1 mg/mL, ready for conjugation. Created using Proteintech's proprietary in-house recombinant technology. Recombinant production enables unrivalled batch-to-batch consistency, easy scale-up, and future security of supply.

Matched antibody pairs are designed for use in a variety of assays and platforms that require matched antibody pairs.

Antibody use should be optimized for each application and assay.

Storage

Storage:

Store at -80°C.

Storage buffer:

PBS only

For technical support and original validation data for this product please contact:

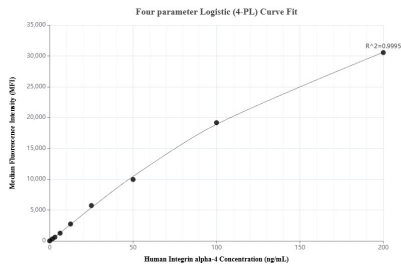
T: 1 (888) 4PTGLAB (1-888-478-4522) (toll free in USA), or 1(312) 455-8498 (outside USA)

E: proteintech@ptglab.com

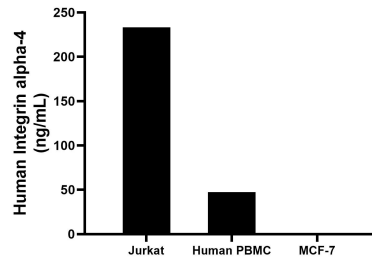
W: ptglab.com

This product is exclusively available under Proteintech Group brand and is not available to purchase from any other manufacturer.

Selected Validation Data



Cytometric bead array standard curve of MP03046-1, Integrin alpha-4 Recombinant Matched Antibody Pair, PBS Only. Capture antibody: 87459-3-PBS. Detection antibody: 87459-5-PBS. Standard: Eg10494. Range: 1.562-200 ng/mL



The mean Integrin alpha-4 concentration was determined to be 233.1 ng/mL in Jurkat cell extract based on a 1.2 mg/mL extract load, 47.4 ng/mL in Human PBMC cell extract based on a 0.6 mg/mL extract load, MCF-7 cell extract were served as a negative control.