

For Research Use Only

CHP1 Recombinant Matched Antibody Pair, PBS Only



Catalog Number:MP03054-2

Capture Antibody Information

Catalog Number:
87479-5-PBS

Host:
Rabbit

Isotype:
IgG

Purification Method:
Protein A purification

Clone ID:
252725G8

Reactivity:
human

Immunogen Catalog Number:
Eg5746

Conjugate:
Unconjugated

Full name:
calcium binding protein P22

Gene ID:
11261

Detection Antibody Information

Catalog Number:
87479-3-PBS

Host:
Rabbit

Isotype:
IgG

Purification Method:
Protein A purification

Clone ID:
252725D7

Reactivity:
human

GenBank:
NM_007236.5

Immunogen Catalog Number:
Eg5746

Conjugate:
Unconjugated

Full name:
calcium binding protein P22

Gene ID:
11261

Applications

Tested Applications:
Sandwich ELISA

Range:
0.195-12.5 ng/mL (Sandwich ELISA)

Recommended Dilutions:
It is recommended that this reagent should be titrated in each testing system to obtain optimal results.

Product Information

MP03054-2 targets CHP1 in immunoassays as a matched antibody pair. Validated in Sandwich ELISA.

Capture antibody: CHP1 Recombinant monoclonal antibody, PBS Only (Capture) 87479-5-PBS (252725G8). 100 µg. Concentration 1 mg/mL.

Detection antibody: CHP1 Recombinant monoclonal antibody, PBS Only (Detector) 87479-3-PBS (252725D7). 100 µg. Concentration 1 mg/mL.

Unconjugated rabbit recombinant monoclonal antibody pair in PBS only storage buffer at a concentration of 1 mg/mL, ready for conjugation. Created using Proteintech's proprietary in-house recombinant technology. Recombinant production enables unrivalled batch-to-batch consistency, easy scale-up, and future security of supply.

Matched antibody pairs are designed for use in a variety of assays and platforms that require matched antibody pairs.

Antibody use should be optimized for each application and assay.

Storage

Storage:
Store at -80°C.
Storage buffer:
PBS only

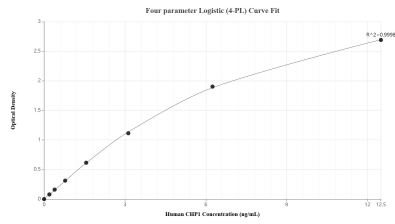
For technical support and original validation data for this product please contact:

T: 1 (888) 4PTGLAB (1-888-478-4522) (toll free in USA), or 1(312) 455-8498 (outside USA)

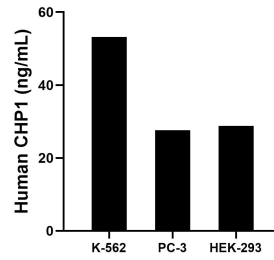
E: proteintech@ptglab.com
W: ptglab.com

This product is exclusively available under Proteintech Group brand and is not available to purchase from any other manufacturer.

Selected Validation Data



Sandwich ELISA standard curve of MP03054-2, Human CHP1 Recombinant Matched Antibody Pair - PBS only. 87479-5-PBS was coated to a plate as the capture antibody and incubated with serial dilutions of standard Eg5746. 87479-3-PBS was HRP conjugated as the detection antibody. Range: 0.195-12.5 ng/mL.



The mean CHP1 concentration was determined to be 53.22 ng/mL in K-562 cell extract based on a 1.20 mg/mL extract load, 27.64 ng/mL in PC-3 cell extract based on a 1.30 mg/mL extract load and 28.79 ng/mL in HEK-293 cell extract based on a 1.20 mg/mL extract load.