

For Research Use Only

XPNPEP2 Recombinant Matched Antibody Pair, PBS Only



Catalog Number:MP03058-1

Capture Antibody Information

Catalog Number:
87521-3-PBS
Host:
Rabbit
Isotype:
IgG
Purification Method:
Protein A purification

Clone ID:
252566E4
Reactivity:
human
Immunogen Catalog Number:
Eg6084

Conjugate:
Unconjugated
Full name:
X-prolyl aminopeptidase (aminopeptidase P) 2, membrane-bound
Gene ID:
7512

Detection Antibody Information

Catalog Number:
87521-2-PBS
Host:
Rabbit
Isotype:
IgG
Purification Method:
Protein A purification

Clone ID:
252566F3
Reactivity:
human
GenBank:
NM_003399.5
Immunogen Catalog Number:
Eg6084

Conjugate:
Unconjugated
Full name:
X-prolyl aminopeptidase (aminopeptidase P) 2, membrane-bound
Gene ID:
7512

Applications

Tested Applications:
Cytometric bead array

Range:
0.156-20 ng/mL (Cytometric Bead Array)

Recommended Dilutions:
It is recommended that this reagent should be titrated in each testing system to obtain optimal results.

Product Information

MP03058-1 targets XPNPEP2 in immunoassays as a matched antibody pair. Validated in Cytometric bead array.

Capture antibody: XPP2 Recombinant monoclonal antibody, PBS Only (Capture) 87521-3-PBS (252566E4). 100 µg. Concentration 1 mg/mL.

Detection antibody: XPP2 Recombinant monoclonal antibody, PBS Only (Detector) 87521-2-PBS (252566F3). 100 µg. Concentration 1 mg/mL.

Unconjugated rabbit recombinant monoclonal antibody pair in PBS only storage buffer at a concentration of 1 mg/mL, ready for conjugation. Created using Proteintech's proprietary in-house recombinant technology. Recombinant production enables unrivalled batch-to-batch consistency, easy scale-up, and future security of supply.

Matched antibody pairs are designed for use in a variety of assays and platforms that require matched antibody pairs.

Antibody use should be optimized for each application and assay.

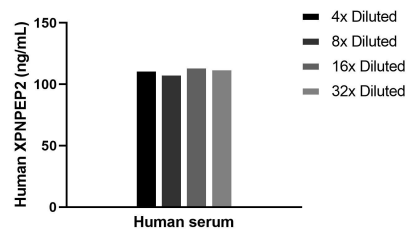
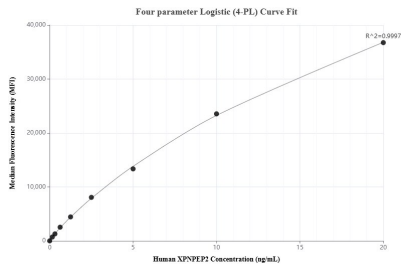
Storage

Storage:
Store at -80°C.
Storage buffer:
PBS only

For technical support and original validation data for this product please contact:
T: 1 (888) 4PTGLAB (1-888-478-4522) (toll free in USA), or 1(312) 455-8498 (outside USA) E: proteintech@ptglab.com W: ptglab.com

This product is exclusively available under Proteintech Group brand and is not available to purchase from any other manufacturer.

Selected Validation Data



Cytometric bead array standard curve of MP03058-1, XPNPEP2 Recombinant Matched Antibody Pair, PBS Only. Capture antibody: 87521-3-PBS. Detection antibody: 87521-2-PBS. Standard: Eg6084. Range: 0.156-20 ng/mL

The mean XPNPEP2 concentration was determined to be 111.9 ng/mL in human serum.